

Product datasheet for **TA337329**

GPR176 Rabbit Polyclonal Antibody

Product data:

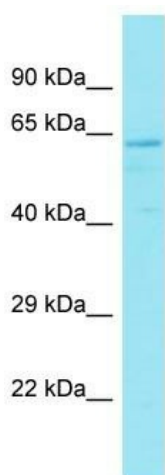
Product Type:	Primary Antibodies
Applications:	WB
Recommended Dilution:	WB
Reactivity:	Human
Host:	Rabbit
Isotype:	IgG
Clonality:	Polyclonal
Immunogen:	The immunogen for Anti-GPR176 antibody is: synthetic peptide directed towards the C-terminal region of Human GPR176. Synthetic peptide located within the following region: LEPSIRSGSQLLEMFHIGQQQIFKPTEDDEESEAKYIGSADFQAKEIFST
Formulation:	Liquid. Purified antibody supplied in 1x PBS buffer with 0.09% (w/v) sodium azide and 2% sucrose. <i>Note that this product is shipped as lyophilized powder to China customers.</i>
Purification:	Affinity Purified
Conjugation:	Unconjugated
Storage:	Store at -20°C as received.
Stability:	Stable for 12 months from date of receipt.
Predicted Protein Size:	56 kDa
Gene Name:	G protein-coupled receptor 176
Database Link:	NP_009154 Entrez Gene 11245 Human Q14439
Background:	Members of the G protein-coupled receptor family, such as GPR176, are cell surface receptors involved in responses to hormones, growth factors, and neurotransmitters.
Synonyms:	HB-954
Note:	Immunogen Sequence Homology: Dog: 100%; Rat: 100%; Horse: 100%; Human: 100%; Bovine: 100%; Pig: 92%; Mouse: 92%; Yeast: 90%; Rabbit: 85%; Guinea pig: 85%



[View online »](#)

Protein Families: Druggable Genome, GPCR, Transmembrane

Product images:



Host: Rabbit
Target Name: GPR176
Sample Tissue: PANC1 Cell Lysate
Antibody Dilution: 1.0 μ g/ml

Host: Rabbit; Target Name: GPR176; Sample Tissue: PANC1 Whole Cell lysates; Antibody Dilution: 1.0 μ g/ml