

Product datasheet for **TA337328**

GPR89B Rabbit Polyclonal Antibody

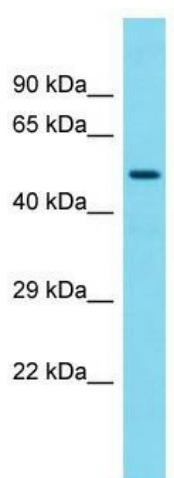
Product data:

Product Type:	Primary Antibodies
Applications:	WB
Recommended Dilution:	WB
Reactivity:	Human
Host:	Rabbit
Isotype:	IgG
Clonality:	Polyclonal
Immunogen:	The immunogen for Anti-GPR89A antibody is: synthetic peptide directed towards the C-terminal region of Human GPR89A. Synthetic peptide located within the following region: LEYRTIITEVLGELQFNFYHRWFDVIFLVSALSSILFLYLAHKQAPEKQM
Formulation:	Liquid. Purified antibody supplied in 1x PBS buffer with 0.09% (w/v) sodium azide and 2% sucrose. <i>Note that this product is shipped as lyophilized powder to China customers.</i>
Purification:	Affinity Purified
Conjugation:	Unconjugated
Storage:	Store at -20°C as received.
Stability:	Stable for 12 months from date of receipt.
Predicted Protein Size:	53 kDa
Gene Name:	G protein-coupled receptor 89B
Database Link:	NP_057418 Entrez Gene 51463 Human B7ZAQ6
Background:	GPR89A is a nearly identical copy of the GPR89B gene.
Synonyms:	GPHR; GPR89; GPR89C; SH120; UNQ192
Note:	Immunogen Sequence Homology: Rat: 100%; Human: 100%; Dog: 93%; Pig: 93%; Horse: 93%; Mouse: 93%; Bovine: 93%; Zebrafish: 93%; Guinea pig: 93%
Protein Families:	Druggable Genome, GPCR, Transmembrane



[View online »](#)

Product images:



Host: Rabbit; Target Name: GPR89A; Sample Tissue: Fetal Heart lysates; Antibody Dilution: 1.0 ug/ml