

Product datasheet for **TA337326**

GOLPH3L Rabbit Polyclonal Antibody

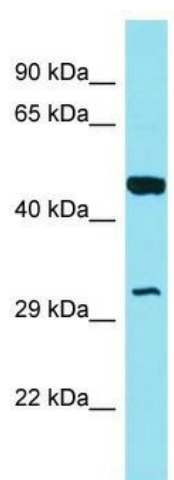
Product data:

Product Type:	Primary Antibodies
Applications:	WB
Recommended Dilution:	WB
Reactivity:	Human
Host:	Rabbit
Isotype:	IgG
Clonality:	Polyclonal
Immunogen:	The immunogen for Anti-GOLPH3L antibody is: synthetic peptide directed towards the N-terminal region of Human GOLPH3L. Synthetic peptide located within the following region: EISKNSEKKMESEEDSNWEKSPDNEDSGDSKDIRLTLMEEVLLLGLKDKE
Formulation:	Liquid. Purified antibody supplied in 1x PBS buffer with 0.09% (w/v) sodium azide and 2% sucrose. <i>Note that this product is shipped as lyophilized powder to China customers.</i>
Purification:	Affinity Purified
Conjugation:	Unconjugated
Storage:	Store at -20°C as received.
Stability:	Stable for 12 months from date of receipt.
Predicted Protein Size:	32 kDa
Gene Name:	golgi phosphoprotein 3 like
Database Link:	NP_060648 Entrez Gene 55204 Human Q9H4A5
Background:	The Golgi complex plays a key role in the sorting and modification of proteins exported from the endoplasmic reticulum. The protein encoded by this gene is localized at the Golgi stack and may have a regulatory role in Golgi trafficking.
Synonyms:	GPP34R
Note:	Immunogen Sequence Homology: Human: 100%; Rat: 79%; Mouse: 79%



[View online »](#)

Product images:



Host: Rabbit; Target Name: GOLPH3L; Sample Tissue: MCF7 Whole Cell lysates; Antibody Dilution: 1.0 ug/ml GOLPH3L is supported by BioGPS gene expression data to be expressed in MCF7