

Product datasheet for **TA337321**

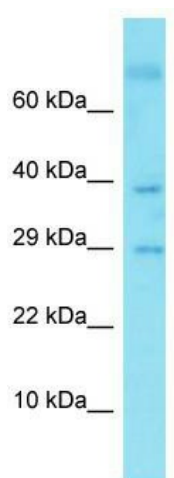
GLIPR2 Rabbit Polyclonal Antibody

Product data:

Product Type:	Primary Antibodies
Applications:	WB
Recommended Dilution:	WB
Reactivity:	Human
Host:	Rabbit
Isotype:	IgG
Clonality:	Polyclonal
Immunogen:	The immunogen for Anti-C9orf19 antibody is: synthetic peptide directed towards the C-terminal region of Human C9orf19. Synthetic peptide located within the following region: EVADRWYSEIKNYNFQQPGFTSGTGHFTAMVWKNTKKMGVGKASASDGSS
Formulation:	Liquid. Purified antibody supplied in 1x PBS buffer with 0.09% (w/v) sodium azide and 2% sucrose.
Purification:	Affinity Purified
Conjugation:	Unconjugated
Storage:	Store at -20°C as received.
Stability:	Stable for 12 months from date of receipt.
Predicted Protein Size:	38 kDa
Gene Name:	GLI pathogenesis related 2
Database Link:	NP_071738 Entrez Gene 152007 Human Q9H4G4
Background:	The function of this protein remains unknown.
Synonyms:	C9orf19; GAPR-1; GAPR1
Note:	Immunogen Sequence Homology: Dog: 100%; Pig: 100%; Rat: 100%; Horse: 100%; Human: 100%; Bovine: 100%; Rabbit: 100%; Guinea pig: 100%; Mouse: 93%; Zebrafish: 85%



[View online »](#)

Product images:

Host: Rabbit; Target Name: C9orf19; Sample
Tissue: Fetal Kidney lysates; Antibody Dilution: 1.0
ug/ml