

## Product datasheet for **TA337320**

### GLB1L3 Rabbit Polyclonal Antibody

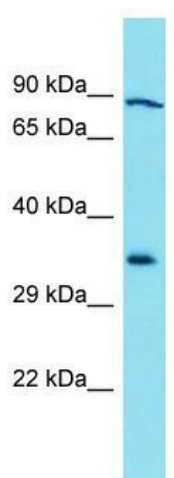
#### Product data:

Product Type:	Primary Antibodies
Applications:	WB
Recommended Dilution:	WB
Reactivity:	Human
Host:	Rabbit
Isotype:	IgG
Clonality:	Polyclonal
Immunogen:	The immunogen for Anti-GLB1L3 antibody is: synthetic peptide directed towards the C-terminal region of Human GLB1L3. Synthetic peptide located within the following region: KHSGLVTSYDYDAVLTEAGDYTEKYLKQLFQSVSATPLPRVPKLPPKA
Formulation:	Liquid. Purified antibody supplied in 1x PBS buffer with 0.09% (w/v) sodium azide and 2% sucrose. <i>Note that this product is shipped as lyophilized powder to China customers.</i>
Purification:	Affinity Purified
Conjugation:	Unconjugated
Storage:	Store at -20°C as received.
Stability:	Stable for 12 months from date of receipt.
Predicted Protein Size:	36 kDa
Gene Name:	galactosidase beta 1 like 3
Database Link:	<a href="#">NP_001073876</a> <a href="#">Entrez Gene 112937 Human</a> <a href="#">Q8NCI6</a>
Background:	The function of this protein remains unknown.
Synonyms:	FLJ90231
Note:	Immunogen Sequence Homology: Human: 100%; Dog: 93%; Rabbit: 91%; Zebrafish: 91%; Pig: 86%; Rat: 86%; Horse: 86%; Mouse: 86%; Bovine: 86%; Guinea pig: 86%



[View online »](#)

## Product images:



Host: Rabbit; Target Name: GLB1L3; Sample  
Tissue: 293T Whole Cell lysates; Antibody  
Dilution: 1.0 ug/ml