

## Product datasheet for **TA337318**

### GKAP1 Rabbit Polyclonal Antibody

#### Product data:

Product Type:	Primary Antibodies
Applications:	WB
Recommended Dilution:	WB
Reactivity:	Human
Host:	Rabbit
Isotype:	IgG
Clonality:	Polyclonal
Immunogen:	The immunogen for Anti-GKAP1 antibody is: synthetic peptide directed towards the C-terminal region of Human GKAP1. Synthetic peptide located within the following region: SIKNELTIQVTSLHAALEQERSKVKVLQAEELAKYQGGRKGRNSESDQCR
Formulation:	Liquid. Purified antibody supplied in 1x PBS buffer with 0.09% (w/v) sodium azide and 2% sucrose. <i>Note that this product is shipped as lyophilized powder to China customers.</i>
Purification:	Affinity Purified
Conjugation:	Unconjugated
Storage:	Store at -20°C as received.
Stability:	Stable for 12 months from date of receipt.
Predicted Protein Size:	41 kDa
Gene Name:	G kinase anchoring protein 1
Database Link:	<a href="#">NP_079487</a> <a href="#">Entrez Gene 80318 Human Q5VSY0</a>
Background:	This gene encodes a protein that is highly similar to the mouse cGMP-dependent protein kinase anchoring protein 42kDa. The mouse protein has been found to localize with the Golgi and recruit cGMP-dependent protein kinase I alpha to the Golgi in mouse testes. It is thought to play a role in germ cell development. Transcript variants encoding different isoforms have been found for this gene.
Synonyms:	FKSG21; GKAP42

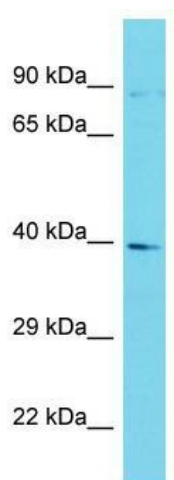


[View online »](#)

**Note:** Immunogen Sequence Homology: Dog: 100%; Pig: 100%; Rat: 100%; Human: 100%; Bovine: 100%; Rabbit: 100%; Guinea pig: 100%; Horse: 93%; Mouse: 79%

**Protein Families:** Druggable Genome

**Product images:**



Host: Rabbit; Target Name: GKAP1; Sample Tissue: HCT15 Whole Cell lysates; Antibody Dilution: 1.0 ug/ml