

Product datasheet for **TA337315**

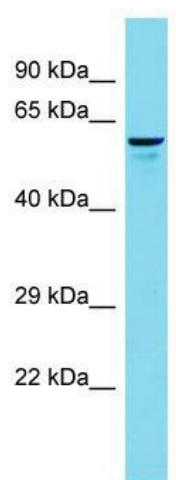
FRMD1 Rabbit Polyclonal Antibody

Product data:

Product Type:	Primary Antibodies
Applications:	WB
Recommended Dilution:	WB
Reactivity:	Human
Host:	Rabbit
Isotype:	IgG
Clonality:	Polyclonal
Immunogen:	The immunogen for Anti-FRMD1 antibody is: synthetic peptide directed towards the N-terminal region of Human FRMD1. Synthetic peptide located within the following region: FGLCVVRNNEYIFMDLEQKLSKYFSKDWKKERNEGNEKPRAPFVAFLRVQ
Formulation:	Liquid. Purified antibody supplied in 1x PBS buffer with 0.09% (w/v) sodium azide and 2% sucrose.
Purification:	Affinity Purified
Conjugation:	Unconjugated
Storage:	Store at -20°C as received.
Stability:	Stable for 12 months from date of receipt.
Predicted Protein Size:	62 kDa
Gene Name:	FERM domain containing 1
Database Link:	NP_079195 Entrez Gene 79981 Human Q8N878
Background:	The function of this protein remains unknown.
Synonyms:	bA164L23.1
Note:	Immunogen Sequence Homology: Human: 100%



[View online »](#)

Product images:

Host: Rabbit; Target Name: FRMD1; Sample
Tissue: 293T Whole Cell lysates; Antibody
Dilution: 1.0 ug/ml FRMD1 is supported by
BioGPS gene expression data to be expressed in
HEK293T