

Product datasheet for **TA337314**

FOLH1B Rabbit Polyclonal Antibody

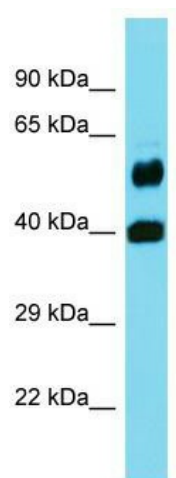
Product data:

Product Type:	Primary Antibodies
Applications:	WB
Recommended Dilution:	WB
Reactivity:	Human
Host:	Rabbit
Isotype:	IgG
Clonality:	Polyclonal
Immunogen:	The immunogen for Anti-FOLH1B antibody is: synthetic peptide directed towards the middle region of Human FOLH1B. Synthetic peptide located within the following region: ELKSPDEGFEGKSLYESWTKKSPSPEFSGMPRISKLGSGNDFEVFFQRLG
Formulation:	Liquid. Purified antibody supplied in 1x PBS buffer with 0.09% (w/v) sodium azide and 2% sucrose. <i>Note that this product is shipped as lyophilized powder to China customers.</i>
Purification:	Affinity Purified
Conjugation:	Unconjugated
Storage:	Store at -20°C as received.
Stability:	Stable for 12 months from date of receipt.
Predicted Protein Size:	50 kDa
Gene Name:	folate hydrolase 1B
Database Link:	NP_710163 Entrez Gene 219595 Human Q9HBA9
Background:	FOLH1B has both folate hydrolase and N-acetylated-alpha-linked-acidic dipeptidase (NAALADase) activity.
Synonyms:	FOLH2; FOLHP; GCP3; GCPIII; PSM; PSMA-LIKE; PSMAL
Note:	Immunogen Sequence Homology: Human: 100%; Dog: 86%; Rat: 86%; Horse: 86%; Pig: 79%; Mouse: 79%; Bovine: 79%; Rabbit: 79%; Guinea pig: 79%



[View online »](#)

Product images:



Host: Rabbit; Target Name: FOLH1B; Sample
Tissue: Fetal Brain lysates; Antibody Dilution: 1.0
ug/ml