

Product datasheet for **TA337311**

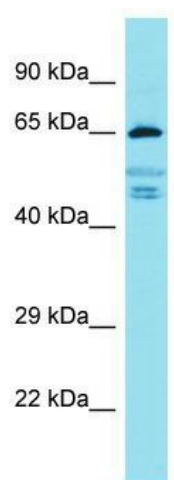
FIGNL2 Rabbit Polyclonal Antibody

Product data:

| | |
|-------------------------|--|
| Product Type: | Primary Antibodies |
| Applications: | WB |
| Recommended Dilution: | WB |
| Reactivity: | Human |
| Host: | Rabbit |
| Isotype: | IgG |
| Clonality: | Polyclonal |
| Immunogen: | The immunogen for Anti-FIGNL2 antibody is: synthetic peptide directed towards the middle region of Human FIGNL2. Synthetic peptide located within the following region: PGLPAPTLPAPAPPTAYGFPTAAPGAESGLSLKRKAADEGPEGRYRKYA |
| Formulation: | Liquid. Purified antibody supplied in 1x PBS buffer with 0.09% (w/v) sodium azide and 2% sucrose. |
| Purification: | Affinity Purified |
| Conjugation: | Unconjugated |
| Storage: | Store at -20°C as received. |
| Stability: | Stable for 12 months from date of receipt. |
| Predicted Protein Size: | 66 kDa |
| Gene Name: | fidgetin like 2 |
| Database Link: | NP_001013712 Entrez Gene 401720 Human A6NMB9 |
| Background: | The function of this protein remains unknown. |
| Synonyms: | FIGNL2 |
| Note: | Immunogen Sequence Homology: Human: 100%; Pig: 86%; Bovine: 86%; Guinea pig: 86%; Mouse: 79% |



[View online »](#)

Product images:

Host: Rabbit; Target Name: FIGNL2; Sample
Tissue: 721_B Whole Cell lysates; Antibody
Dilution: 1.0 ug/ml