

Product datasheet for **TA337310**

FGD5 Rabbit Polyclonal Antibody

Product data:

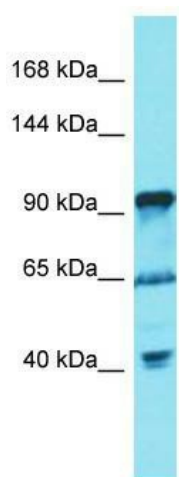
Product Type:	Primary Antibodies
Applications:	WB
Recommended Dilution:	WB
Reactivity:	Human
Host:	Rabbit
Isotype:	IgG
Clonality:	Polyclonal
Immunogen:	The immunogen for Anti-FGD5 antibody is: synthetic peptide directed towards the C-terminal region of Human FGD5. Synthetic peptide located within the following region: FVIKGVLYTYMASEDKVALESMPLLGFTIAPEKEEGSSEVGPIFHLYHK
Formulation:	Liquid. Purified antibody supplied in 1x PBS buffer with 0.09% (w/v) sodium azide and 2% sucrose.
Purification:	Affinity Purified
Conjugation:	Unconjugated
Storage:	Store at -20°C as received.
Stability:	Stable for 12 months from date of receipt.
Predicted Protein Size:	59 kDa
Gene Name:	FYVE, RhoGEF and PH domain containing 5
Database Link:	NP_689749 Entrez Gene 152273 Human Q6ZNL6
Background:	FGD5 activates CDC42, a member of the Ras-like family of Rho- and Rac proteins, by exchanging bound GDP for free GTP. It mediates VEGF-induced CDC42 activation. It may regulate proangiogenic action of VEGF in vascular endothelial cells, including network formation, directional movement and proliferation and may play a role in regulating the actin cytoskeleton and cell shape.
Synonyms:	ZFYVE23



[View online »](#)

Note: Immunogen Sequence Homology: Dog: 100%; Rat: 100%; Horse: 100%; Human: 100%; Mouse: 100%

Product images:



Host: Rabbit; Target Name: FGD5; Sample Tissue: U937 Whole Cell lysates; Antibody Dilution: 1.0 ug/ml