

Product datasheet for **TA337309**

FBXO46 Rabbit Polyclonal Antibody

Product data:

Product Type:	Primary Antibodies
Applications:	WB
Recommended Dilution:	WB
Reactivity:	Human
Host:	Rabbit
Isotype:	IgG
Clonality:	Polyclonal
Immunogen:	The immunogen for Anti-FBXO46 antibody is: synthetic peptide directed towards the C-terminal region of Human FBXO46. Synthetic peptide located within the following region: VDVVVTGVVDECIFFGKDGTKNVKEETVCLTVSPEEPPPPGQLFFLQNRG
Formulation:	Liquid. Purified antibody supplied in 1x PBS buffer with 0.09% (w/v) sodium azide and 2% sucrose. <i>Note that this product is shipped as lyophilized powder to China customers.</i>
Purification:	Affinity Purified
Conjugation:	Unconjugated
Storage:	Store at -20°C as received.
Stability:	Stable for 12 months from date of receipt.
Predicted Protein Size:	64 kDa
Gene Name:	F-box protein 46
Database Link:	NP_001073938 Entrez Gene 23403 Human Q6PJ61
Background:	Members of the F-box protein family, such as FBXO46, are characterized by an approximately 40-amino acid F-box motif. SCF complexes, formed by SKP1, cullin, and F-box proteins, act as protein-ubiquitin ligases. F-box proteins interact with SKP1 through the F box, and they interact with ubiquitination targets through other protein interaction domains.
Synonyms:	20D7-FC4; Fbx46; FBXO34L

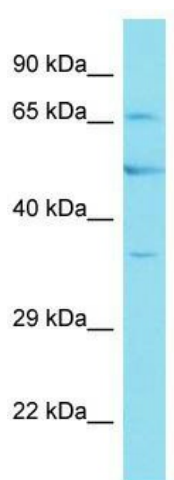


[View online »](#)

Note: Immunogen Sequence Homology: Dog: 100%; Pig: 100%; Rat: 100%; Human: 100%; Mouse: 100%; Guinea pig: 100%

Protein Families: Druggable Genome

Product images:



Host: Rabbit; Target Name: FBXO46; Sample Tissue: HepG2 Whole Cell lysates; Antibody Dilution: 1.0 ug/ml