

Product datasheet for **TA337308**

FBXL15 Rabbit Polyclonal Antibody

Product data:

Product Type:	Primary Antibodies
Applications:	WB
Recommended Dilution:	WB
Reactivity:	Human
Host:	Rabbit
Isotype:	IgG
Clonality:	Polyclonal
Immunogen:	The immunogen for Anti-FBXL15 antibody is: synthetic peptide directed towards the N-terminal region of Human FBXL15. Synthetic peptide located within the following region: PPMPSGGEQEPGAVRFLDLPWEDVLLPHVLRVPLRQLLRQLQVRSRAFR
Formulation:	Liquid. Purified antibody supplied in 1x PBS buffer with 0.09% (w/v) sodium azide and 2% sucrose.
Purification:	Affinity Purified
Conjugation:	Unconjugated
Storage:	Store at -20°C as received.
Stability:	Stable for 12 months from date of receipt.
Predicted Protein Size:	32 kDa
Gene Name:	F-box and leucine-rich repeat protein 15
Database Link:	NP_077302 Entrez Gene 79176 Human Q9H469
Background:	FBXL15 is a substrate recognition component of a (SKP1-CUL1-F-box protein) E3 ubiquitin-protein ligase complex which mediates the ubiquitination and subsequent proteasomal degradation of SMURF1, thereby acting as a positive regulator of the BMP signaling pathway. It is required for dorsal/ventral pattern formation and bone mass maintenance and also mediates ubiquitination of SMURF2 and WWP2.
Synonyms:	Fbl15; FBXO37; JET; PSD

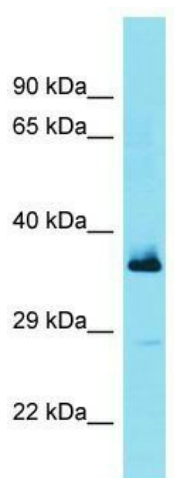


[View online »](#)

Note: Immunogen Sequence Homology: Dog: 100%; Horse: 100%; Human: 100%; Rat: 93%; Goat: 93%; Mouse: 93%; Bovine: 93%; Rabbit: 86%

Protein Families: Druggable Genome

Product images:



Host: Rabbit; Target Name: FBXL15; Sample Tissue: Fetal Lung lysates; Antibody Dilution: 1.0 ug/ml