

Product datasheet for **TA337307**

TRIM31 Rabbit Polyclonal Antibody

Product data:

Product Type:	Primary Antibodies
Applications:	IHC, WB
Recommended Dilution:	WB, IHC
Reactivity:	Human, Mouse
Host:	Rabbit
Isotype:	IgG
Clonality:	Polyclonal
Immunogen:	The immunogen for anti-TRIM31 antibody: synthetic peptide directed towards the N terminal of human TRIM31. Synthetic peptide located within the following region: CRESKDHKSHNVSLIEEAAQNYQGQIQEQIQLQKKEKETVQVKAQGVHR
Formulation:	Liquid. Purified antibody supplied in 1x PBS buffer with 0.09% (w/v) sodium azide and 2% sucrose. <i>Note that this product is shipped as lyophilized powder to China customers.</i>
Purification:	Affinity Purified
Conjugation:	Unconjugated
Storage:	Store at -20°C as received.
Stability:	Stable for 12 months from date of receipt.
Predicted Protein Size:	48 kDa
Gene Name:	tripartite motif containing 31
Database Link:	NP_008959 Entrez Gene 224762 Mouse Entrez Gene 11074 Human Q9BZY9
Background:	TRIM31 encodes for a member of the tripartite motif (TRIM) family. The TRIM motif includes three zinc-binding domains, a RING, a B-box type 1 and a B-box type 2, and a coiled-coil region. The protein localizes to both the cytoplasm and the nucleus.
Synonyms:	C6orf13; HCG1; HCGI; RNF
Note:	Immunogen Sequence Homology: Human: 100%; Rabbit: 93%; Mouse: 86%; Bovine: 79%

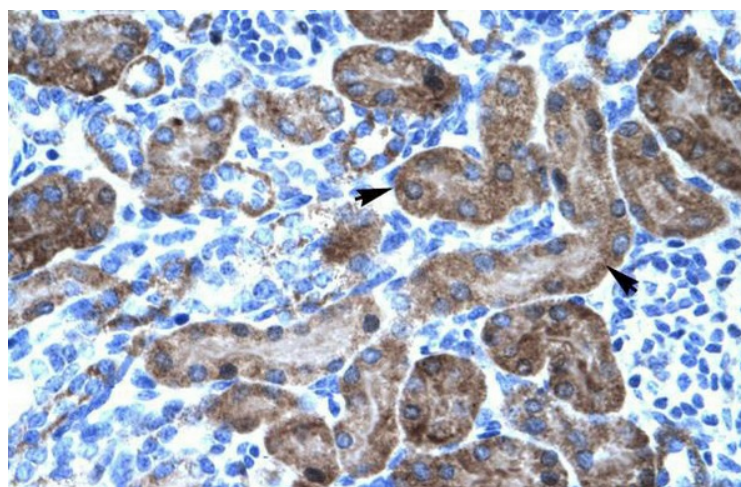


[View online »](#)

Product images:



WB Suggested Anti-TRIM31 Antibody Titration:
0.2-1 ug/ml; ELISA Titer: 1:12500; Positive Control:
Jurkat cell lysate



Human kidney