

Product datasheet for **TA337306**

PHF17 (JADE1) Rabbit Polyclonal Antibody

Product data:

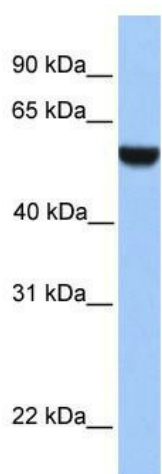
Product Type:	Primary Antibodies
Applications:	IHC, WB
Recommended Dilution:	WB, IHC
Reactivity:	Human
Host:	Rabbit
Isotype:	IgG
Clonality:	Polyclonal
Immunogen:	The immunogen for anti-PHF17 antibody: synthetic peptide directed towards the C terminal of human PHF17. Synthetic peptide located within the following region: YQYWKLKRKVNFNKPLITPKKDEEDNLAKREQDVLFRRLQLFTHLRQDLE
Formulation:	Liquid. Purified antibody supplied in 1x PBS buffer with 0.09% (w/v) sodium azide and 2% sucrose. <i>Note that this product is shipped as lyophilized powder to China customers.</i>
Purification:	Affinity Purified
Conjugation:	Unconjugated
Storage:	Store at -20°C as received.
Stability:	Stable for 12 months from date of receipt.
Predicted Protein Size:	58 kDa
Gene Name:	jade family PHD finger 1
Database Link:	NP_079176 Entrez Gene 79960 Human Q6IE81
Background:	PHF17 belongs to the JADE family. It contains 2 PHD-type zinc fingers. PHF17 is a transcriptional coactivator which seems to act by promoting acetylation of nucleosomal histone H4 by HTATIP. PHF17 promotes apoptosis. It may act as a renal tumor suppressor.
Synonyms:	PHF17
Note:	Immunogen Sequence Homology: Dog: 100%; Pig: 100%; Rat: 100%; Horse: 100%; Human: 100%; Mouse: 100%; Bovine: 100%; Rabbit: 100%; Guinea pig: 100%; Zebrafish: 77%



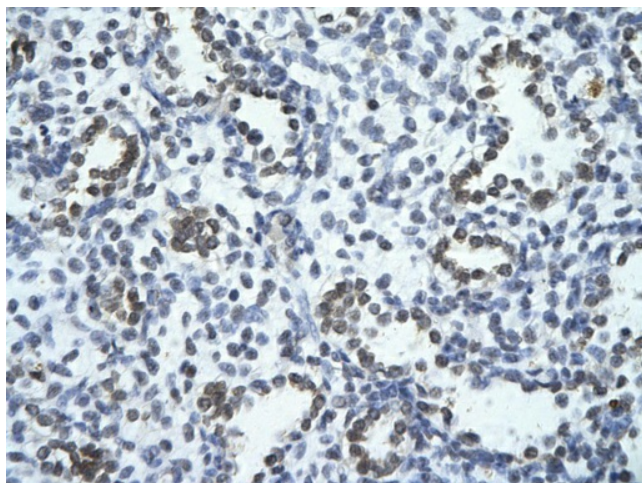
[View online »](#)

Protein Families: Druggable Genome, Transcription Factors

Product images:



WB Suggested Anti-PHF17 Antibody Titration: 0.2-1 ug/ml; ELISA Titer: 1:62500; Positive Control: Human heart



Rabbit Anti-PHF17 Antibody; Paraffin Embedded Tissue: Human alveolar cell; Cellular Data: Epithelial cells of renal tubule; Antibody Concentration: 4.0-8.0 ug/ml; Magnification: 400X