

Product datasheet for **TA337304**

LRRC14 Rabbit Polyclonal Antibody

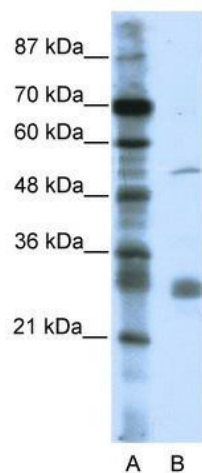
Product data:

Product Type:	Primary Antibodies
Applications:	WB
Recommended Dilution:	WB
Reactivity:	Human
Host:	Rabbit
Isotype:	IgG
Clonality:	Polyclonal
Immunogen:	The immunogen for anti-LRRC14 antibody: synthetic peptide directed towards the C terminal of human LRRC14. Synthetic peptide located within the following region: ELLRDSVAQAE LRTVHFPVDCYEGLPWPPASV LLEASINEEK FARVE
Formulation:	Liquid. Purified antibody supplied in 1x PBS buffer with 0.09% (w/v) sodium azide and 2% sucrose. <i>Note that this product is shipped as lyophilized powder to China customers.</i>
Purification:	Affinity Purified
Conjugation:	Unconjugated
Storage:	Store at -20°C as received.
Stability:	Stable for 12 months from date of receipt.
Predicted Protein Size:	55 kDa
Gene Name:	leucine rich repeat containing 14
Database Link:	NP_055480 Entrez Gene 9684 Human Q15048
Background:	LRRC14 belongs to the PRAME family and contains 6 LRR (leucine-rich) repeats
Synonyms:	LRRC14A
Note:	Immunogen Sequence Homology: Pig: 100%; Human: 100%; Dog: 93%; Rat: 93%; Horse: 93%; Mouse: 93%; Bovine: 93%; Guinea pig: 93%



[View online »](#)

Product images:



WB Suggested Anti-LRRC14 Antibody Titration:
0.2-1 ug/ml; ELISA Titer: 1:62500; Positive Control:
HepG2 cell lysate