

Product datasheet for **TA337302**

RBPSUHL (RBPJL) Rabbit Polyclonal Antibody

Product data:

Product Type:	Primary Antibodies
Applications:	WB
Recommended Dilution:	WB
Reactivity:	Human
Host:	Rabbit
Isotype:	IgG
Clonality:	Polyclonal
Immunogen:	The immunogen for anti-RBPJL antibody: synthetic peptide directed towards the middle region of human RBPJL. Synthetic peptide located within the following region: TIIGTESVEFSFSTSLACTLEPVTPVPLISTLELSGGGDVATLELHGENF
Formulation:	Liquid. Purified antibody supplied in 1x PBS buffer with 0.09% (w/v) sodium azide and 2% sucrose. <i>Note that this product is shipped as lyophilized powder to China customers.</i>
Purification:	Affinity Purified
Conjugation:	Unconjugated
Storage:	Store at -20°C as received.
Stability:	Stable for 12 months from date of receipt.
Predicted Protein Size:	57 kDa
Gene Name:	recombination signal binding protein for immunoglobulin kappa J region like
Database Link:	NP_055091 Entrez Gene 11317 Human Q9UBG7



[View online »](#)

Background:

RBPJL is similar in sequence to the mouse RPB-L protein and Drosophila suppressor of hairless protein. In mouse, recombining binding protein L (RBP-L) is a transcription factor that binds to DNA sequences almost identical to that bound by the Notch receptor signalling pathway transcription factor RBP-J. However, unlike RBP-J, RBP-L does not interact with Notch receptors. RBP-L has been shown to activate transcription in concert with Epstein-Barr virus nuclear antigen-2 (EBNA2). RBPJL is similar in sequence to the mouse RPB-L protein and Drosophila suppressor of hairless protein. In mouse, recombining binding protein L (RBP-L) is a transcription factor that binds to DNA sequences almost identical to that bound by the Notch receptor signalling pathway transcription factor RBP-J. However, unlike RBP-J, RBP-L does not interact with Notch receptors. RBP-L has been shown to activate transcription in concert with Epstein-Barr virus nuclear antigen-2 (EBNA2). The protein encoded by this gene is similar in sequence to the mouse RPB-L protein and Drosophila suppressor of hairless protein.

Synonyms:

RBPL; RBPSUHL; SUHL

Note:

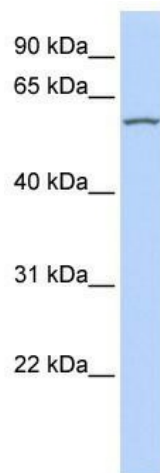
Immunogen Sequence Homology: Dog: 100%; Pig: 100%; Rat: 100%; Horse: 100%; Human: 100%; Mouse: 100%; Bovine: 100%; Rabbit: 100%; Guinea pig: 100%; Zebrafish: 79%

Protein Families:

Druggable Genome, Transcription Factors

Protein Pathways:

Notch signaling pathway

Product images:

WB Suggested Anti-RBPJL Antibody Titration: 0.2-1 ug/ml; ELISA Titer: 1:312500; Positive Control: 721_B cell lysate RBPJL is supported by BioGPS gene expression data to be expressed in 721_B