

Product datasheet for **TA337301**

USF1 Rabbit Polyclonal Antibody

Product data:

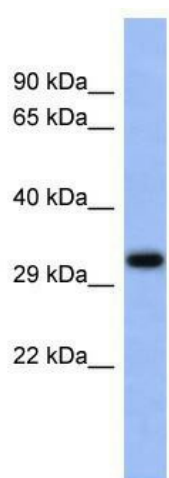
Product Type:	Primary Antibodies
Applications:	WB
Recommended Dilution:	WB
Reactivity:	Human, Mouse
Host:	Rabbit
Isotype:	IgG
Clonality:	Polyclonal
Immunogen:	The immunogen for anti-USF1 antibody: synthetic peptide directed towards the middle region of human USF1. Synthetic peptide located within the following region: IQELRQSNHRLSEELQGLDQLQLDNDVLRQQVEDLKNKNLLLRALRHHG
Formulation:	Liquid. Purified antibody supplied in 1x PBS buffer with 0.09% (w/v) sodium azide and 2% sucrose. <i>Note that this product is shipped as lyophilized powder to China customers.</i>
Purification:	Affinity Purified
Conjugation:	Unconjugated
Storage:	Store at -20°C as received.
Stability:	Stable for 12 months from date of receipt.
Predicted Protein Size:	33 kDa
Gene Name:	upstream transcription factor 1
Database Link:	NP_009053 Entrez Gene 22278 Mouse Entrez Gene 7391 Human P22415
Background:	USF1 is a member of the basic helix-loop-helix leucine zipper family, and can function as a cellular transcription factor. USF1 can activate transcription through pyrimidine-rich initiator (Inr) elements and E-box motifs. This gene has been linked to fami
Synonyms:	bHLHb11; FCHL; FCHL1; HYPLIP1; MLTF; MLTFI; UEF
Note:	Immunogen Sequence Homology: Dog: 100%; Pig: 100%; Rat: 100%; Horse: 100%; Human: 100%; Mouse: 100%; Bovine: 100%; Rabbit: 100%; Guinea pig: 100%



[View online »](#)

Protein Families: Druggable Genome, Transcription Factors

Product images:



WB Suggested Anti-USF1 Antibody Titration: 0.2-1 ug/ml; ELISA Titer: 1:62500; Positive Control: Human kidney