

Product datasheet for **TA337300**

TRIM10 Rabbit Polyclonal Antibody

Product data:

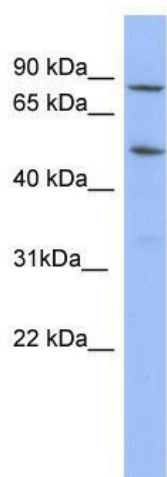
Product Type:	Primary Antibodies
Applications:	WB
Recommended Dilution:	WB
Reactivity:	Human
Host:	Rabbit
Isotype:	IgG
Clonality:	Polyclonal
Immunogen:	The immunogen for anti-TRIM10 antibody: synthetic peptide directed towards the N terminal of human TRIM10. Synthetic peptide located within the following region: PNWQLANVVENIERLQLVSTLGLGEEDVCQEHGEKIYFFCEDDEMQLCVV
Formulation:	Liquid. Purified antibody supplied in 1x PBS buffer with 0.09% (w/v) sodium azide and 2% sucrose. <i>Note that this product is shipped as lyophilized powder to China customers.</i>
Purification:	Affinity Purified
Conjugation:	Unconjugated
Storage:	Store at -20°C as received.
Stability:	Stable for 12 months from date of receipt.
Predicted Protein Size:	55 kDa
Gene Name:	tripartite motif containing 10
Database Link:	NP_006769 Entrez Gene 10107 Human Q9UDY6
Background:	TRIM10 is a member of the tripartite motif (TRIM) family. The TRIM motif includes three zinc-binding domains, a RING, a B-box type 1 and a B-box type 2, and a coiled-coil region. This protein localizes to cytoplasmic bodies. Studies in mice suggest that t
Synonyms:	HERF1; RFB30; RNF9
Note:	Immunogen Sequence Homology: Human: 100%



[View online »](#)

Protein Families: Druggable Genome

Product images:



WB Suggested Anti-TRIM10 Antibody Titration:
0.2-1 ug/ml; ELISA Titer: 1:312500; Positive
Control: PANC1 cell lysate
There is BioGPS gene
expression data showing that TRIM10 is
expressed in PANC1