

Product datasheet for **TA337299**

BS69 (ZMYND11) Rabbit Polyclonal Antibody

Product data:

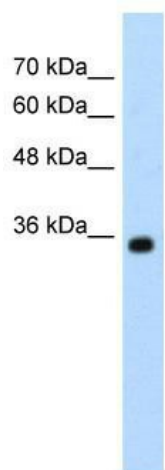
Product Type:	Primary Antibodies
Applications:	IHC, WB
Recommended Dilution:	WB, IHC
Reactivity:	Human
Host:	Rabbit
Isotype:	IgG
Clonality:	Polyclonal
Immunogen:	The immunogen for anti-ZMYND11 antibody: synthetic peptide directed towards the N terminal of human ZMYND11. Synthetic peptide located within the following region: KKGKDNKHPMYRRLVHSAVDVPTIQEKVNEGKYSYEEFKADAQLLLHNT
Formulation:	Liquid. Purified antibody supplied in 1x PBS buffer with 0.09% (w/v) sodium azide and 2% sucrose. <i>Note that this product is shipped as lyophilized powder to China customers.</i>
Purification:	Protein A purified
Conjugation:	Unconjugated
Storage:	Store at -20°C as received.
Stability:	Stable for 12 months from date of receipt.
Predicted Protein Size:	40 kDa
Gene Name:	zinc finger MYND-type containing 11
Database Link:	NP_001189393 Entrez Gene 10771 Human Q15326
Background:	ZMYND11 was first identified by its ability to bind the adenovirus E1A protein. The protein localizes to the nucleus. It functions as a transcriptional repressor, and expression of E1A inhibits this repression.
Synonyms:	BRAM1; BS69; MRD30
Note:	Immunogen Sequence Homology: Dog: 100%; Pig: 100%; Rat: 100%; Horse: 100%; Human: 100%; Mouse: 100%; Bovine: 100%; Rabbit: 100%; Guinea pig: 100%



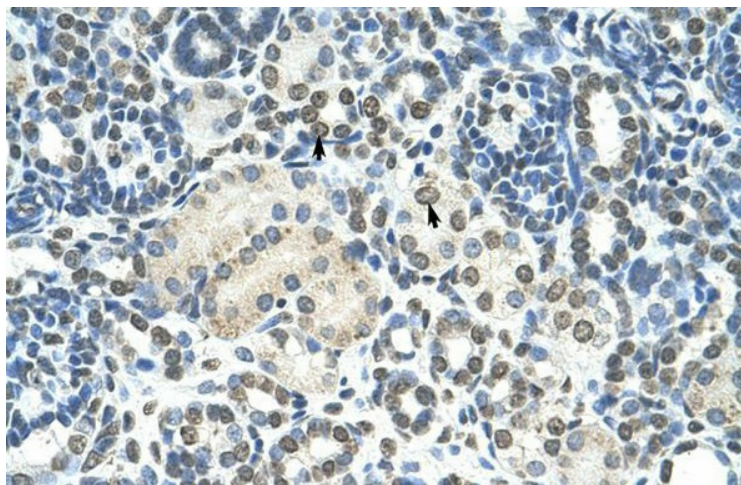
[View online »](#)

Protein Families: Druggable Genome, Transcription Factors

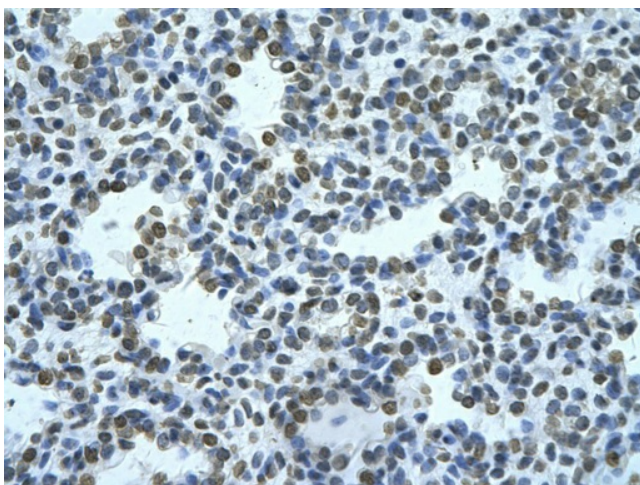
Product images:



WB Suggested Anti-ZMYND11 Antibody Titration: 1.25 ug/ml; Positive Control: HepG2 cell lysate
ZMYND11 is supported by BioGPS gene expression data to be expressed in HepG2



Human kidney



Rabbit Anti-ZMYND11 Antibody; Paraffin
Embedded Tissue: Human alveolar cell; Cellular
Data: Epithelial cells of renal tubule; Antibody
Concentration: 4.0-8.0 ug/ml; Magnification: 400X