

## Product datasheet for **TA337295**

### **RNF22 (TRIM3) Rabbit Polyclonal Antibody**

#### **Product data:**

Product Type:	Primary Antibodies
Applications:	IHC, WB
Recommended Dilution:	WB, IHC
Reactivity:	Human
Host:	Rabbit
Isotype:	IgG
Clonality:	Polyclonal
Immunogen:	The immunogen for anti-TRIM3 antibody: synthetic peptide directed towards the N terminal of human TRIM3. Synthetic peptide located within the following region: TICGAKQKVLQSQLDTRLRQGQEHIGSSCSFAEQALRLGSAPEVLLVRKHM
Formulation:	Liquid. Purified antibody supplied in 1x PBS buffer with 0.09% (w/v) sodium azide and 2% sucrose. <i>Note that this product is shipped as lyophilized powder to China customers.</i>
Purification:	Protein A purified
Conjugation:	Unconjugated
Storage:	Store at -20°C as received.
Stability:	Stable for 12 months from date of receipt.
Predicted Protein Size:	81 kDa
Gene Name:	tripartite motif containing 3
Database Link:	<a href="#">NP_006449</a> <a href="#">Entrez Gene 10612 Human</a> <a href="#">O75382</a>



[View online »](#)

**Background:**

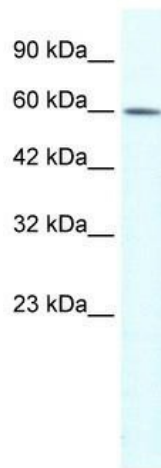
The protein encoded by TRIM3 is a member of the tripartite motif (TRIM) family, also called the 'RING-B-box-coiled-coil' (RBCC) subgroup of RING finger proteins. The TRIM motif includes three zinc-binding domains, a RING, a B-box type 1 and a B-box type 2, and a coiled-coil region. This protein localizes to cytoplasmic filaments. It is similar to a rat protein which is a specific partner for the tail domain of myosin V, a class of myosins which are involved in the targeted transport of organelles. The rat protein can also interact with alpha-actinin-4. Thus it is suggested that this human protein may play a role in myosin V-mediated cargo transport.

**Synonyms:**

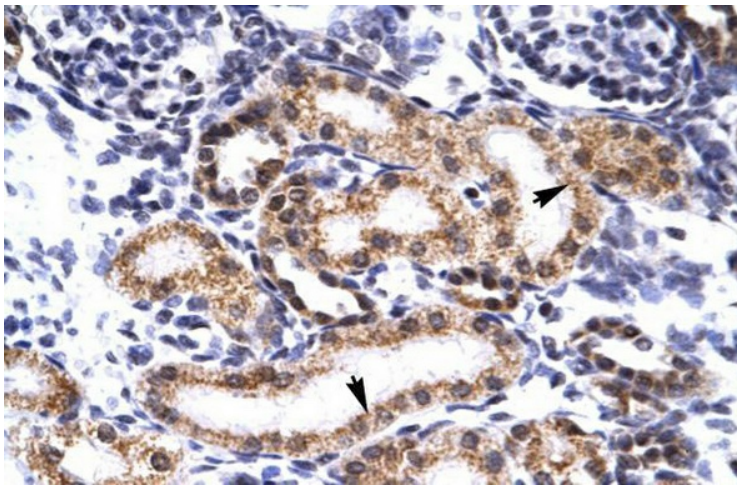
BERP; HAC1; RNF22; RNF97

**Note:**

Immunogen Sequence Homology: Human: 100%; Rabbit: 100%; Dog: 93%; Pig: 93%; Rat: 93%; Horse: 93%; Mouse: 93%; Bovine: 93%; Guinea pig: 93%; Zebrafish: 92%

**Product images:**


WB Suggested Anti-TRIM3 Antibody Titration: 1.0 ug/ml; ELISA Titer: 1:1562500; Positive Control: HepG2 cell lysate



Human kidney