

Product datasheet for **TA337293**

RNF41 Rabbit Polyclonal Antibody

Product data:

Product Type:	Primary Antibodies
Applications:	WB
Recommended Dilution:	WB
Reactivity:	Human
Host:	Rabbit
Isotype:	IgG
Clonality:	Polyclonal
Immunogen:	The immunogen for anti-RNF41 antibody: synthetic peptide directed towards the middle region of human RNF41. Synthetic peptide located within the following region: QQTRIAELEKTSAEHKHQLAEQKRDIQLLKAYMRAIRSVNPNLQNLEETI
Formulation:	Liquid. Purified antibody supplied in 1x PBS buffer with 0.09% (w/v) sodium azide and 2% sucrose. <i>Note that this product is shipped as lyophilized powder to China customers.</i>
Purification:	Affinity Purified
Conjugation:	Unconjugated
Storage:	Store at -20°C as received.
Stability:	Stable for 12 months from date of receipt.
Predicted Protein Size:	28 kDa
Gene Name:	ring finger protein 41
Database Link:	NP_919339 Entrez Gene 10193 Human Q9H4P4



[View online »](#)

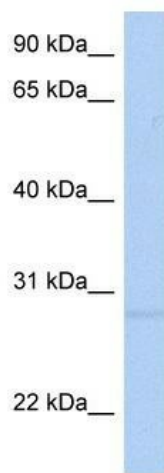
Background: RNF41 contains a RING finger, a motif present in a variety of functionally distinct proteins and known to be involved in protein-protein and protein-DNA interactions. The specific function of this protein has not yet been determined. The protein encoded by this gene contains a RING finger, a motif present in a variety of functionally distinct proteins and known to be involved in protein-protein and protein-DNA interactions. The specific function of this protein has not yet been determined. Three alternatively spliced transcript variants encoding two distinct isoforms have been reported.

Synonyms: FLRF; NRDP1; SBBI03

Note: Immunogen Sequence Homology: Dog: 100%; Pig: 100%; Rat: 100%; Horse: 100%; Human: 100%; Mouse: 100%; Bovine: 100%; Rabbit: 100%; Guinea pig: 100%; Zebrafish: 86%

Protein Pathways: Endocytosis

Product images:



WB Suggested Anti-RNF41 Antibody Titration: 0.2-1 ug/ml; Positive Control: Human Liver