

## Product datasheet for **TA337291**

### Aspartate beta hydroxylase (ASPH) Rabbit Polyclonal Antibody

#### Product data:

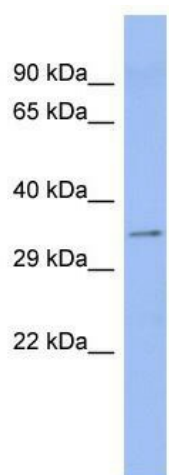
Product Type:	Primary Antibodies
Applications:	IHC, WB
Recommended Dilution:	WB, IHC
Reactivity:	Human
Host:	Rabbit
Isotype:	IgG
Clonality:	Polyclonal
Immunogen:	The immunogen for anti-ASPH antibody: synthetic peptide directed towards the middle region of human ASPH. Synthetic peptide located within the following region: PEEAEPHTEPEEQVPVEAEPQNIEDAQEQIQSLLHEMVHAEHVEGEDLQ
Formulation:	Liquid. Purified antibody supplied in 1x PBS buffer with 0.09% (w/v) sodium azide and 2% sucrose.
Purification:	Affinity Purified
Conjugation:	Unconjugated
Storage:	Store at -20°C as received.
Stability:	Stable for 12 months from date of receipt.
Predicted Protein Size:	34 kDa
Gene Name:	aspartate beta-hydroxylase
Database Link:	<a href="#">NP_115857</a> <a href="#">Entrez Gene 444 Human</a> <a href="#">Q12797</a>
Background:	ASPH is thought to play an important role in calcium homeostasis. Alternative splicing of this gene results in five transcript variants which vary in protein translation, the coding of catalytic domains, and tissue expression. Variation among these transc
Synonyms:	AAH; BAH; CASQ2BP1; FDLAB; HAAH; JCTN; junctin
Note:	Immunogen Sequence Homology: Human: 100%; Mouse: 86%; Rat: 83%; Pig: 79%; Bovine: 77%



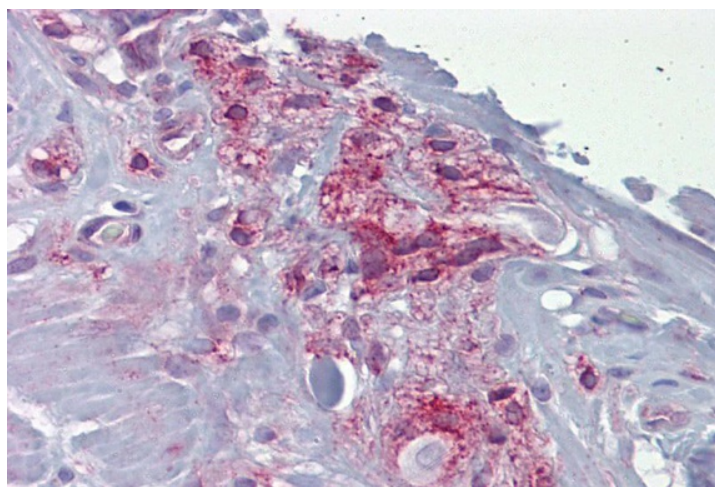
[View online »](#)

Protein Families: Druggable Genome, Transmembrane

### Product images:



WB Suggested Anti-ASPH Antibody Titration: 0.2-1 ug/ml; ELISA Titer: 1:62500; Positive Control: ACHN cell lysate



Immunohistochemistry with Small intestine, myenteric plexus tissue at an antibody concentration of 5 ug/ml using anti-ASPH antibody