

## Product datasheet for **TA337290**

### PAX8 Rabbit Polyclonal Antibody

#### Product data:

Product Type:	Primary Antibodies
Applications:	IHC, WB
Recommended Dilution:	WB, IHC
Reactivity:	Human
Host:	Rabbit
Isotype:	IgG
Clonality:	Polyclonal
Immunogen:	The immunogen for anti-PAX8 antibody: synthetic peptide directed towards the middle region of human PAX8. Synthetic peptide located within the following region: SSSGPRKHLRTDAFSQHHLEPLECFERQHYPEAYASPSHTKGEGQGERWW
Formulation:	Liquid. Purified antibody supplied in 1x PBS buffer with 0.09% (w/v) sodium azide and 2% sucrose. <i>Note that this product is shipped as lyophilized powder to China customers.</i>
Purification:	Affinity Purified
Conjugation:	Unconjugated
Storage:	Store at -20°C as received.
Stability:	Stable for 12 months from date of receipt.
Predicted Protein Size:	35 kDa
Gene Name:	paired box 8
Database Link:	<a href="#">NP_039247</a> <a href="#">Entrez Gene 7849 Human</a> <a href="#">Q06710</a>
Background:	PAX8 is a member of the paired box (PAX) family of transcription factors. Members of this family typically contain a paired box domain, an octapeptide, and a paired-type homeodomain. This nuclear protein is involved in thyroid follicular cell development
Synonyms:	OTTHUMP00000158659; OTTHUMP00000158660; paired box 8; paired domain gene 8
Note:	Immunogen Sequence Homology: Dog: 100%; Pig: 100%; Rat: 100%; Human: 100%; Mouse: 100%; Bovine: 100%; Rabbit: 100%; Guinea pig: 100%; Horse: 79%

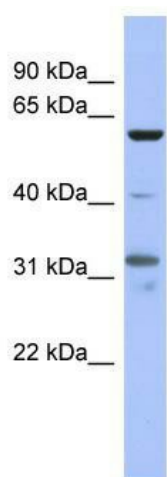


[View online »](#)

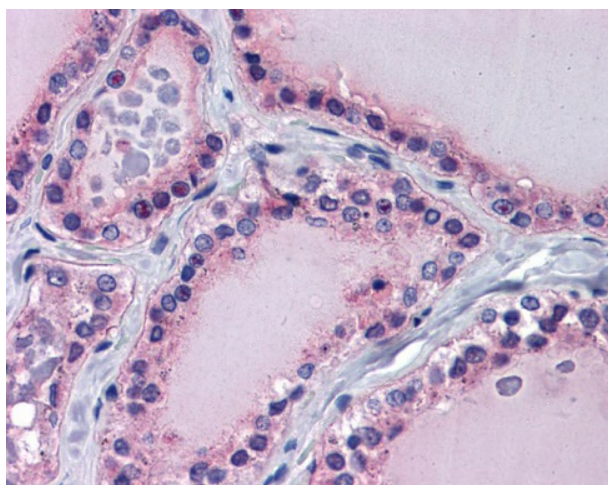
Protein Families: Druggable Genome, Transcription Factors

Protein Pathways: Pathways in cancer, Thyroid cancer

### Product images:



WB Suggested Anti-PAX8 Antibody Titration: 0.2-1 ug/ml; ELISA Titer: 1:12500; Positive Control: NCI-H226 cell lysate



Thyroid