

Product datasheet for **TA337289**

MEIS2 Rabbit Polyclonal Antibody

Product data:

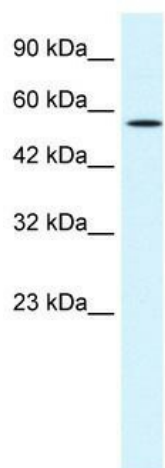
Product Type:	Primary Antibodies
Applications:	IHC, WB
Recommended Dilution:	WB, IHC
Reactivity:	Human
Host:	Rabbit
Isotype:	IgG
Clonality:	Polyclonal
Immunogen:	The immunogen for anti-MEIS2 antibody: synthetic peptide directed towards the N terminal of human MEIS2. Synthetic peptide located within the following region: HYGAHAPHPNVMPASMGSAVNDALKRDKDAIYGHPLFPLLALVFEKCELA
Formulation:	Liquid. Purified antibody supplied in 1x PBS buffer with 0.09% (w/v) sodium azide and 2% sucrose.
Purification:	Protein A purified
Conjugation:	Unconjugated
Storage:	Store at -20°C as received.
Stability:	Stable for 12 months from date of receipt.
Predicted Protein Size:	52 kDa
Gene Name:	Meis homeobox 2
Database Link:	NP_733775 Entrez Gene 4212 Human O14770
Background:	MEIS2 encodes a homeobox protein belonging to the TALE ('three amino acid loop extension') family of homeodomain-containing proteins. TALE homeobox proteins are highly conserved transcription regulators, and several members have been shown to be essential contributors to developmental programs.
Synonyms:	HsT18361; MRG1
Note:	Immunogen Sequence Homology: Dog: 100%; Pig: 100%; Rat: 100%; Horse: 100%; Human: 100%; Mouse: 100%; Bovine: 100%; Rabbit: 100%; Zebrafish: 100%; Guinea pig: 100%



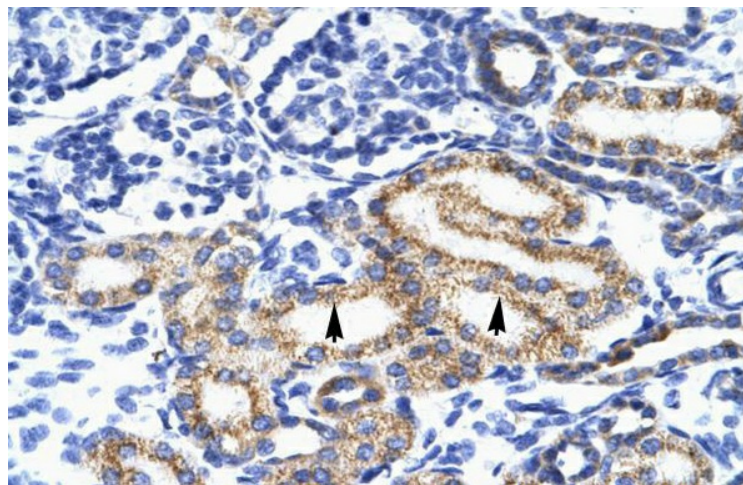
[View online »](#)

Protein Families: Transcription Factors

Product images:



WB Suggested Anti-MEIS2 Antibody Titration: 1.25 ug/ml; ELISA Titer: 1:312500; Positive Control: HepG2 cell lysate



Human kidney