

Product datasheet for **TA337287**

VILIP3 (HPCAL1) Rabbit Polyclonal Antibody

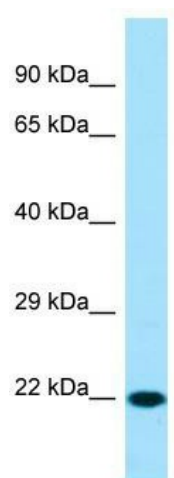
Product data:

Product Type:	Primary Antibodies
Applications:	WB
Recommended Dilution:	WB
Reactivity:	Mouse
Host:	Rabbit
Isotype:	IgG
Clonality:	Polyclonal
Immunogen:	The immunogen for Anti-Hpcal1 antibody is: synthetic peptide directed towards the C-terminal region of Mouse Hpcal1. Synthetic peptide located within the following region: DESTPEKRTDKIFRQMDTNNNGKLSLEEFIKGAKSDPSIVRLLQCDPSSA
Formulation:	Liquid. Purified antibody supplied in 1x PBS buffer with 0.09% (w/v) sodium azide and 2% sucrose. <i>Note that this product is shipped as lyophilized powder to China customers.</i>
Purification:	Affinity Purified
Conjugation:	Unconjugated
Storage:	Store at -20°C as received.
Stability:	Stable for 12 months from date of receipt.
Predicted Protein Size:	22 kDa
Gene Name:	hippocalcin like 1
Database Link:	NP_002140 Entrez Gene 53602 Mouse P37235
Background:	Hpcal1 may be involved in the calcium-dependent regulation of rhodopsin phosphorylation.
Synonyms:	BDR1; HLP2; VILIP-3
Note:	Immunogen Sequence Homology: Dog: 100%; Pig: 100%; Rat: 100%; Horse: 100%; Human: 100%; Mouse: 100%; Bovine: 100%; Rabbit: 100%; Guinea pig: 100%; Sheep: 93%; Zebrafish: 93%



[View online »](#)

Product images:



WB Suggested Anti-Hpcal1 Antibody; Titration: 1.0 ug/ml; Positive Control: Mouse Stomach