

Product datasheet for **TA337285**

KLHL14 Rabbit Polyclonal Antibody

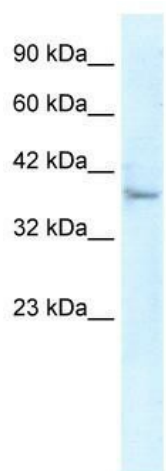
Product data:

Product Type:	Primary Antibodies
Applications:	WB
Recommended Dilution:	WB
Reactivity:	Human
Host:	Rabbit
Isotype:	IgG
Clonality:	Polyclonal
Immunogen:	The immunogen for anti-KLHL14 antibody: synthetic peptide directed towards the N terminal of human KLHL14. Synthetic peptide located within the following region: MSRSGDRTSTFDPSHSDNLLHGLNLLWRKQLFCDVTLTAQGQQFHCHKAV
Formulation:	Liquid. Purified antibody supplied in 1x PBS buffer with 0.09% (w/v) sodium azide and 2% sucrose.
Purification:	Protein A purified
Conjugation:	Unconjugated
Storage:	Store at -20°C as received.
Stability:	Stable for 12 months from date of receipt.
Predicted Protein Size:	71 kDa
Gene Name:	kelch like family member 14
Database Link:	NP_065856 Entrez Gene 57565 Human Q9P2G3
Background:	KLHL14 is a member of the KLHL family.
Synonyms:	kelch-like 14; kelch-like 14 (Drosophila)
Note:	Immunogen Sequence Homology: Dog: 100%; Pig: 100%; Rat: 100%; Human: 100%; Mouse: 100%; Bovine: 100%; Rabbit: 100%; Guinea pig: 100%; Zebrafish: 86%



[View online »](#)

Product images:



WB Suggested Anti-KLHL14 Antibody Titration:
5.0 ug/ml; ELISA Titer: 1:62500; Positive Control:
HepG2 cell lysate