

Product datasheet for **TA337284**

CREB3L2 Rabbit Polyclonal Antibody

Product data:

Product Type:	Primary Antibodies
Applications:	IHC, WB
Recommended Dilution:	WB, IHC
Reactivity:	Human
Host:	Rabbit
Isotype:	IgG
Clonality:	Polyclonal
Immunogen:	The immunogen for anti-CREB3L2 antibody: synthetic peptide directed towards the N terminal of human CREB3L2. Synthetic peptide located within the following region: HSYSLCEEPRAQSPFTHITSDSFNDDEVESEKWYLSTDF
Formulation:	Liquid. Purified antibody supplied in 1x PBS buffer with 0.09% (w/v) sodium azide and 2% sucrose. <i>Note that this product is shipped as lyophilized powder to China customers.</i>
Purification:	Protein A purified
Conjugation:	Unconjugated
Storage:	Store at -20°C as received.
Stability:	Stable for 12 months from date of receipt.
Predicted Protein Size:	57 kDa
Gene Name:	cAMP responsive element binding protein 3-like 2
Database Link:	NP_919047 Entrez Gene 64764 Human Q70SY1
Background:	CREB3L2 is a member of the old astrocyte specifically induced substance (OASIS) DNA binding and basic leucine zipper dimerization (bZIP) family of transcription factors, which includes CREB3 (MIM 606443) and CREB4 (MIM 607138).
Synonyms:	BBF2H7
Note:	Immunogen Sequence Homology: Human: 100%; Bovine: 93%; Pig: 87%; Rat: 87%; Horse: 87%; Rabbit: 87%; Guinea pig: 87%; Mouse: 86%; Dog: 85%



[View online »](#)

Protein Families: Transcription Factors

Protein Pathways: Huntington's disease, Melanogenesis, Prostate cancer

Product images:



WB Suggested Anti-CREB3L2 Antibody Titration: 1.25 ug/ml; ELISA Titer: 1:12500; Positive Control: Jurkat cell lysate

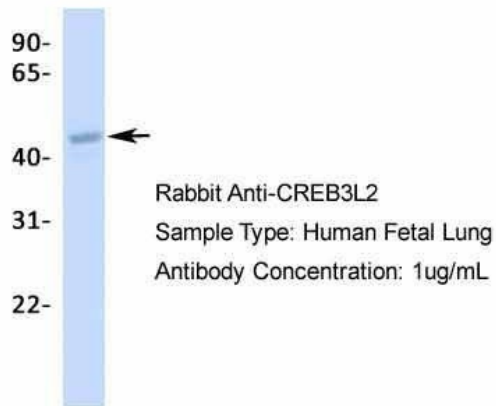
CREB3L2



Rabbit Anti-CREB3L2
 Sample Type: Human Fetal Muscle
 Antibody Concentration: 1ug/mL

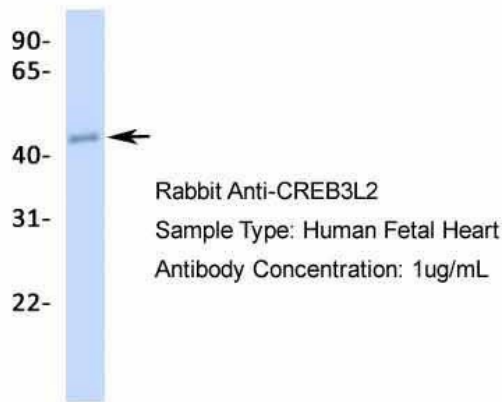
Host: Rabbit; Target Name: CREB3L2; Sample Tissue: Human Fetal Muscle; Antibody Dilution: 1.0 ug/ml

CREB3L2



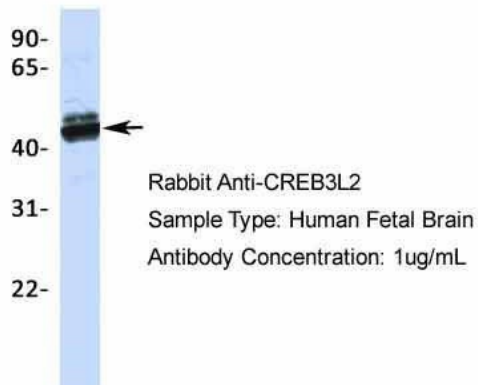
Host: Rabbit; Target Name: CREB3L2; Sample Tissue: Human Fetal Lung; Antibody Dilution: 1.0 ug/ml

CREB3L2

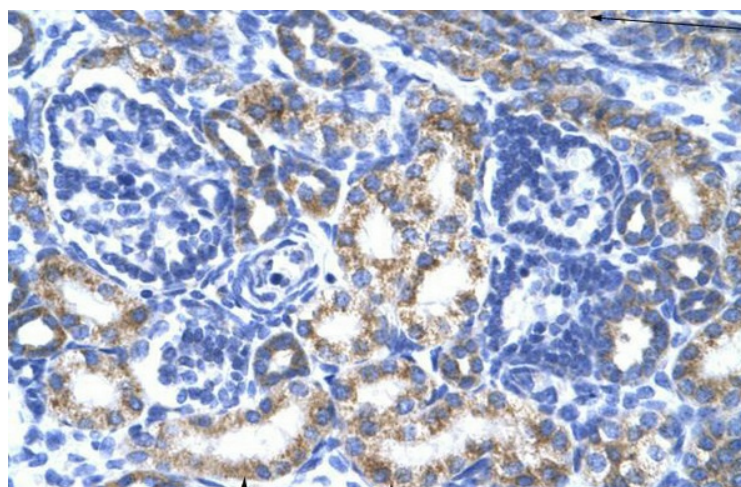


Host: Rabbit; Target Name: CREB3L2; Sample Tissue: Human Fetal Heart; Antibody Dilution: 1.0 ug/ml

CREB3L2



Host: Rabbit; Target Name: CREB3L2; Sample Tissue: Human Fetal Brain; Antibody Dilution: 1.0 ug/ml



Human kidney