

Product datasheet for **TA337282**

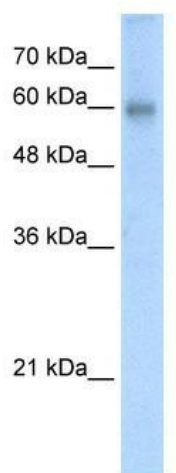
RCOR2 Rabbit Polyclonal Antibody

Product data:

Product Type:	Primary Antibodies
Applications:	WB
Recommended Dilution:	WB
Reactivity:	Human
Host:	Rabbit
Isotype:	IgG
Clonality:	Polyclonal
Immunogen:	The immunogen for anti-RCOR2 antibody: synthetic peptide directed towards the N terminal of human RCOR2. Synthetic peptide located within the following region: YYYSWKKTRSRTSVMDRQARRLGGRKDKEDSDELEEGRGVSEGEPPAD
Formulation:	Liquid. Purified antibody supplied in 1x PBS buffer with 0.09% (w/v) sodium azide and 2% sucrose.
Purification:	Protein A purified
Conjugation:	Unconjugated
Storage:	Store at -20°C as received.
Stability:	Stable for 12 months from date of receipt.
Predicted Protein Size:	58 kDa
Gene Name:	REST corepressor 2
Database Link:	NP_775858 Entrez Gene 283248 Human Q8IZ40
Background:	RCOR2 may act as a component of a corepressor complex that represses transcription.
Synonyms:	RCOR2
Note:	Immunogen Sequence Homology: Human: 100%; Dog: 93%; Rat: 93%; Horse: 93%; Mouse: 93%; Pig: 92%; Guinea pig: 92%; Bovine: 86%; Rabbit: 86%
Protein Families:	Transcription Factors


[View online »](#)

Product images:



WB Suggested Anti-RCOR2 Antibody Titration: 5.0 ug/ml; Positive Control: Jurkat cell lysate