

Product datasheet for **TA337280**

KBTBD5 (KLHL40) Rabbit Polyclonal Antibody

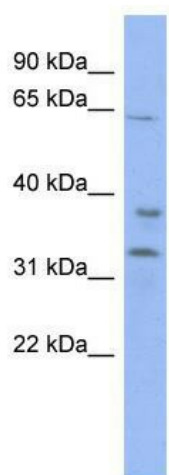
Product data:

Product Type:	Primary Antibodies
Applications:	WB
Recommended Dilution:	WB
Reactivity:	Human
Host:	Rabbit
Isotype:	IgG
Clonality:	Polyclonal
Immunogen:	The immunogen for anti-KBTBD5 antibody: synthetic peptide directed towards the middle region of human KBTBD5. Synthetic peptide located within the following region: LRKVQMVKDAHEGRITTLRKKKKGKDGAGAKEADKGTSKAKAEDEEAER
Formulation:	Liquid. Purified antibody supplied in 1x PBS buffer with 0.09% (w/v) sodium azide and 2% sucrose. <i>Note that this product is shipped as lyophilized powder to China customers.</i>
Purification:	Affinity Purified
Conjugation:	Unconjugated
Storage:	Store at -20°C as received.
Stability:	Stable for 12 months from date of receipt.
Predicted Protein Size:	69 kDa
Gene Name:	kelch like family member 40
Database Link:	NP_689606 Entrez Gene 131377 Human Q2TBA0
Background:	The exact function of KBTBD5 remains unknown.
Synonyms:	KBTBD5; NEM8; SRYP; SYRP
Note:	Immunogen Sequence Homology: Human: 100%; Horse: 79%



[View online »](#)

Product images:



WB Suggested Anti-KBTBD5 Antibody Titration:
0.2-1 ug/ml; ELISA Titer: 1:1562500; Positive
Control: HT1080 cell lysate