

Product datasheet for **TA337279**

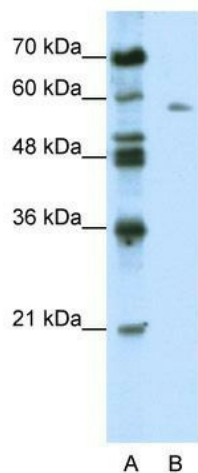
BTBD14A (NACC2) Rabbit Polyclonal Antibody

Product data:

Product Type:	Primary Antibodies
Applications:	WB
Recommended Dilution:	WB
Reactivity:	Human
Host:	Rabbit
Isotype:	IgG
Clonality:	Polyclonal
Immunogen:	The immunogen for anti-BTBD14A antibody: synthetic peptide directed towards the C terminal of human BTBD14A. Synthetic peptide located within the following region: FEQRIYAERRGDAATIVALRTDAVNVDLSAAANPAFDAGEEVDGAGSVIQ
Formulation:	Liquid. Purified antibody supplied in 1x PBS buffer with 0.09% (w/v) sodium azide and 2% sucrose.
Purification:	Affinity Purified
Conjugation:	Unconjugated
Storage:	Store at -20°C as received.
Stability:	Stable for 12 months from date of receipt.
Predicted Protein Size:	63 kDa
Gene Name:	NACC family member 2
Database Link:	NP_653254 Entrez Gene 138151 Human Q96BF6
Background:	cDNA sequence was generated by The National Institutes of Health Mammalian Gene Collection (MGC) Program.
Synonyms:	BEND9; BTBD14; BTBD14A; BTBD31; NAC-2; RBB
Note:	Immunogen Sequence Homology: Human: 100%; Dog: 93%; Rat: 93%; Bovine: 86%; Pig: 79%; Horse: 79%; Mouse: 79%; Guinea pig: 79%



[View online »](#)

Product images:


WB Suggested Anti-BTBD14A Antibody Titration:
0.2-1 ug/ml; ELISA Titer: 1:62500; Positive Control:
HepG2 cell lysate NACC2 is supported by BioGPS
gene expression data to be expressed in HepG2