

## Product datasheet for **TA337276**

### **RNF89 (TRIM6) Rabbit Polyclonal Antibody**

#### **Product data:**

Product Type:	Primary Antibodies
Applications:	WB
Recommended Dilution:	WB
Reactivity:	Human
Host:	Rabbit
Isotype:	IgG
Clonality:	Polyclonal
Immunogen:	The immunogen for anti-TRIM6 antibody: synthetic peptide directed towards the middle region of human TRIM6. Synthetic peptide located within the following region: FNQLRNILDRVEQRELKKLEQEEKKGLRIIEEAENDLVHQTQSLRELISD
Formulation:	Liquid. Purified antibody supplied in 1x PBS buffer with 0.09% (w/v) sodium azide and 2% sucrose.
Purification:	Affinity Purified
Conjugation:	Unconjugated
Storage:	Store at -20°C as received.
Stability:	Stable for 12 months from date of receipt.
Predicted Protein Size:	56 kDa
Gene Name:	tripartite motif containing 6
Database Link:	<a href="#">NP_001003818</a> <a href="#">Entrez Gene 117854 Human</a> <a href="#">Q9C030</a>



[View online »](#)

**Background:**

TRIM6 is a member of the tripartite motif (TRIM) family. The TRIM motif includes three zinc-binding domains, a RING, a B-box type 1 and a B-box type 2, and a coiled-coil region. The protein localizes to the nucleus, but its specific function has not been identified. The protein encoded by this gene is a member of the tripartite motif (TRIM) family. The TRIM motif includes three zinc-binding domains, a RING, a B-box type 1 and a B-box type 2, and a coiled-coil region. The protein localizes to the nucleus, but its specific function has not been identified. This gene is mapped to chromosome 11p15, where it resides within a TRIM gene cluster. Two alternatively spliced transcript variants encoding distinct isoforms have been found for this gene. A read-through transcript transcribed from this gene and TRIM34 has been observed.

**Synonyms:**

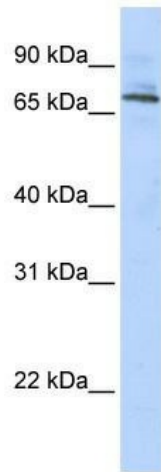
RNF89

**Note:**

Immunogen Sequence Homology: Human: 100%; Yeast: 100%; Dog: 90%; Rat: 90%; Mouse: 90%; Rabbit: 90%; Zebrafish: 90%; Horse: 86%; Bovine: 86%; Pig: 79%; Guinea pig: 79%

**Protein Families:**

Druggable Genome

**Product images:**

WB Suggested Anti-TRIM6 Antibody Titration: 0.2-1 ug/ml; ELISA Titer: 1:12500; Positive Control: Human Placenta