

## Product datasheet for **TA337273**

### KLHL13 Rabbit Polyclonal Antibody

#### Product data:

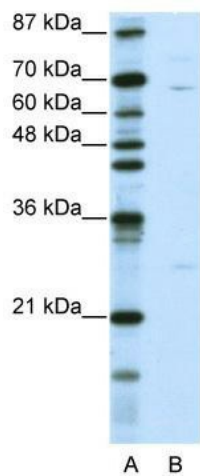
Product Type:	Primary Antibodies
Applications:	IHC, WB
Recommended Dilution:	WB, IHC
Reactivity:	Human
Host:	Rabbit
Isotype:	IgG
Clonality:	Polyclonal
Immunogen:	The immunogen for anti-KLHL13 antibody: synthetic peptide directed towards the N terminal of human KLHL13. Synthetic peptide located within the following region: KTSSPAIWKFPVPLKTSRSTPLSPAYISLVEEEDQHMKLSLGGSEMGLS
Formulation:	Liquid. Purified antibody supplied in 1x PBS buffer with 0.09% (w/v) sodium azide and 2% sucrose. <i>Note that this product is shipped as lyophilized powder to China customers.</i>
Purification:	Affinity Purified
Conjugation:	Unconjugated
Storage:	Store at -20°C as received.
Stability:	Stable for 12 months from date of receipt.
Predicted Protein Size:	74 kDa
Gene Name:	kelch like family member 13
Database Link:	<a href="#">NP_277030</a> <a href="#">Entrez Gene 90293 Human</a> <a href="#">Q9P2N7</a>
Background:	KLHL13 contains 6 Kelch repeats and 1 BTB (POZ) domain. The function of this protein remains unknown
Synonyms:	BKLHD2
Note:	Immunogen Sequence Homology: Dog: 100%; Pig: 100%; Rat: 100%; Horse: 100%; Human: 100%; Mouse: 100%; Bovine: 100%; Rabbit: 100%; Guinea pig: 100%



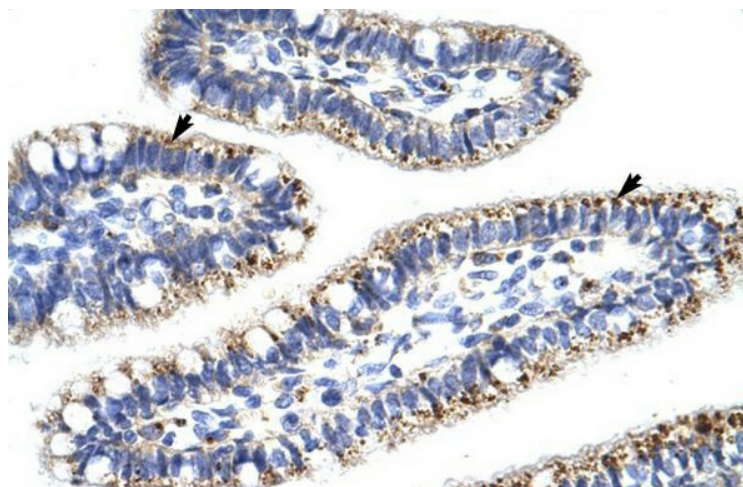
[View online »](#)

Protein Pathways: Ubiquitin mediated proteolysis

Product images:



WB Suggested Anti-KLHL13 Antibody Titration: 0.2-1 ug/ml; ELISA Titer: 1:62500; Positive Control: Jurkat cell lysate



Human Intestine