

Product datasheet for **TA337270**

RNF93 (TRIM15) Rabbit Polyclonal Antibody

Product data:

| | |
|-------------------------|--|
| Product Type: | Primary Antibodies |
| Applications: | IHC, WB |
| Recommended Dilution: | WB, IHC |
| Reactivity: | Human |
| Host: | Rabbit |
| Isotype: | IgG |
| Clonality: | Polyclonal |
| Immunogen: | The immunogen for anti-TRIM15 antibody: synthetic peptide directed towards the N terminal of human TRIM15. Synthetic peptide located within the following region: RDEIEDVKCQEDQKLQVLLTQIESKKHQVETAFERLQQELEQQRCLLLAR |
| Formulation: | Liquid. Purified antibody supplied in 1x PBS buffer with 0.09% (w/v) sodium azide and 2% sucrose. <i>Note that this product is shipped as lyophilized powder to China customers.</i> |
| Purification: | Protein A purified |
| Conjugation: | Unconjugated |
| Storage: | Store at -20°C as received. |
| Stability: | Stable for 12 months from date of receipt. |
| Predicted Protein Size: | 52 kDa |
| Gene Name: | tripartite motif containing 15 |
| Database Link: | NP_150232 Entrez Gene 89870 Human Q9C019 |
| Background: | TRIM15 is a member of the tripartite motif (TRIM) family. The TRIM motif includes three zinc-binding domains, a RING, a B-box type 1 and a B-box type 2, and a coiled-coil region. The protein localizes to the cytoplasm. Its function has not been identified. |
| Synonyms: | RNF93; ZNF178; ZNFB7 |
| Note: | Immunogen Sequence Homology: Human: 100%; Mouse: 93%; Rat: 86%; Horse: 86%; Bovine: 86%; Rabbit: 79% |



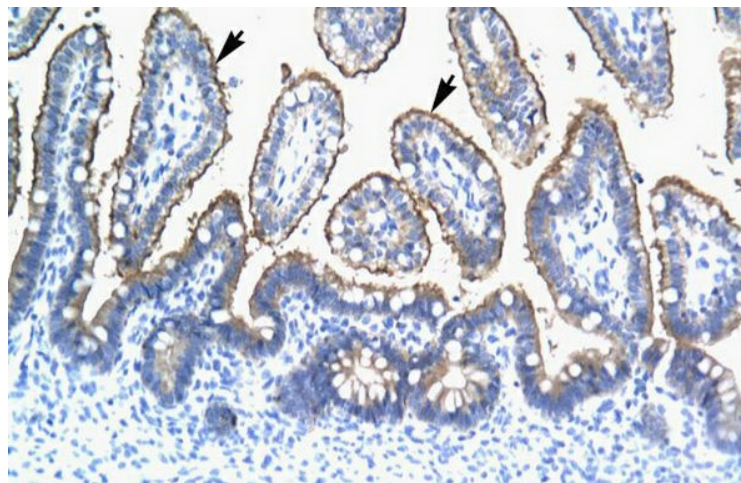
[View online »](#)

Protein Families: Druggable Genome, Transcription Factors

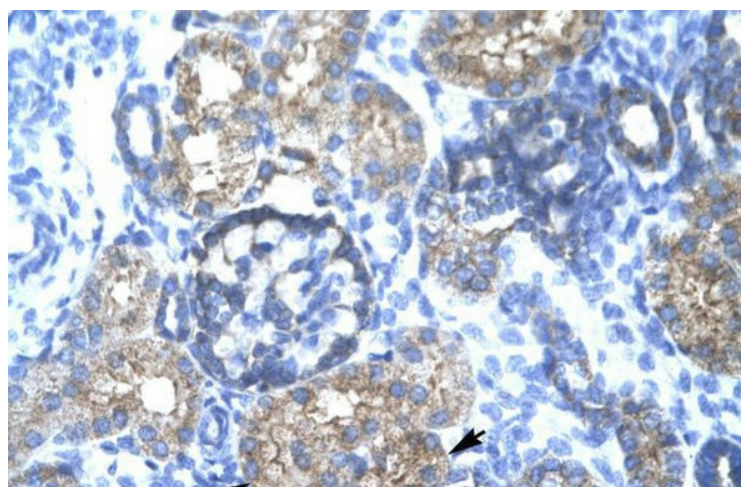
Product images:



WB Suggested Anti-TRIM15 Antibody Titration:
1.25 ug/ml; ELISA Titer: 1:312500; Positive
Control: HepG2 cell lysate There is BioGPS gene
expression data showing that TRIM15 is
expressed in HepG2



Human Intestine



Human kidney