

## Product datasheet for **TA337269**

### PSIP1 Rabbit Polyclonal Antibody

#### Product data:

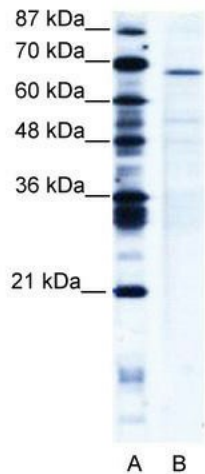
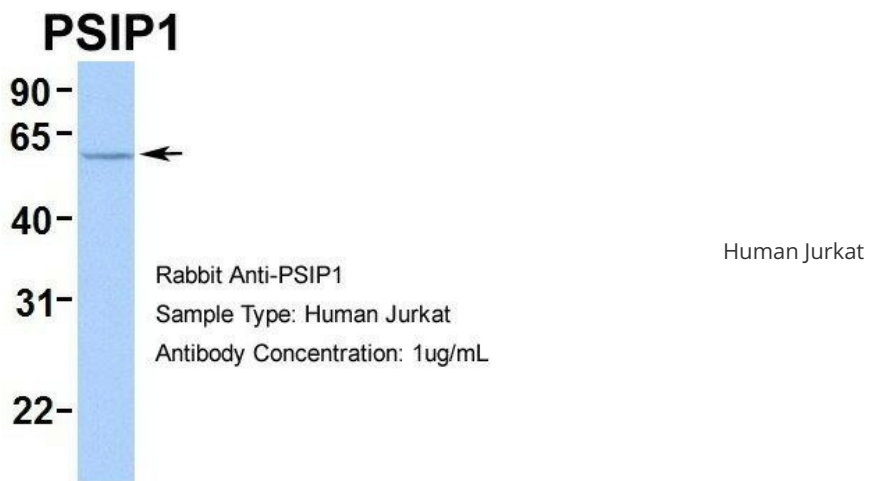
Product Type:	Primary Antibodies
Applications:	IHC, WB
Recommended Dilution:	WB, IHC
Reactivity:	Human
Host:	Rabbit
Isotype:	IgG
Clonality:	Polyclonal
Immunogen:	The immunogen for anti-PSIP1 antibody: synthetic peptide directed towards the middle region of human PSIP1. Synthetic peptide located within the following region: AADRKRKQEEQMETEQNKDEGKKPEVKKVEKKRETSMD SRLQRIHAEIK
Formulation:	Liquid. Purified antibody supplied in 1x PBS buffer with 0.09% (w/v) sodium azide and 2% sucrose. <i>Note that this product is shipped as lyophilized powder to China customers.</i>
Purification:	Protein A purified
Conjugation:	Unconjugated
Storage:	Store at -20°C as received.
Stability:	Stable for 12 months from date of receipt.
Predicted Protein Size:	60 kDa
Gene Name:	PC4 and SFRS1 interacting protein 1
Database Link:	<a href="#">NP_150091</a> <a href="#">Entrez Gene 11168 Human</a> <a href="#">O75475</a>
Background:	PSIP1 is a transcriptional coactivator. It also acts as an adaptor to coordinate pre-mRNA splicing and transcriptional activation of class II genes.
Synonyms:	DFS70; LEDGF; p52; p75; PAIP; PSIP2
Note:	Immunogen Sequence Homology: Dog: 100%; Pig: 100%; Rat: 100%; Horse: 100%; Human: 100%; Mouse: 100%; Sheep: 100%; Bovine: 100%; Rabbit: 100%; Guinea pig: 100%



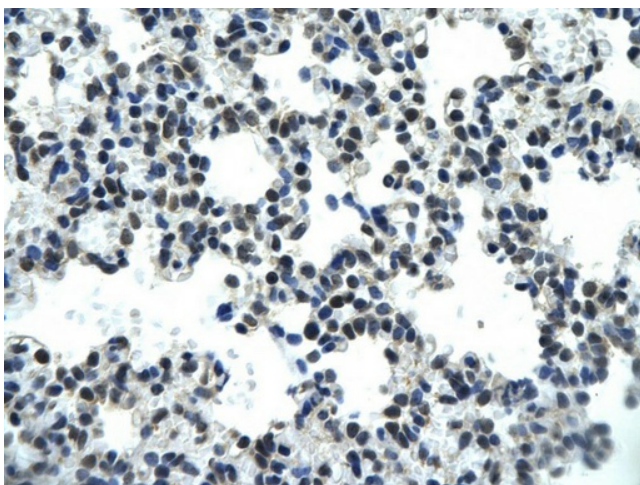
[View online »](#)

Protein Families: Stem cell - Pluripotency, Transcription Factors

Product images:



WB Suggested Anti-PSIP1 Antibody; Titration: 5 ug/ml; Positive Control: Jurkat Whole Cell PSIP1 is strongly supported by BioGPS gene expression data to be expressed in Human Jurkat cells



Rabbit Anti-PSIP1 antibody; Paraffin Embedded Tissue: Human Lung cell; Cellular Data: Epithelial cells of renal tubule; Antibody Concentration: 4.0-8.0 ug/ml; Magnification: 400X