

Product datasheet for **TA337267**

PSIP1 Rabbit Polyclonal Antibody

Product data:

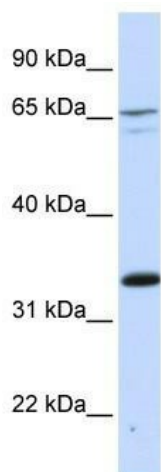
| | |
|-------------------------|---|
| Product Type: | Primary Antibodies |
| Applications: | WB |
| Recommended Dilution: | WB |
| Reactivity: | Human |
| Host: | Rabbit |
| Isotype: | IgG |
| Clonality: | Polyclonal |
| Immunogen: | The immunogen for anti-PSIP1 antibody: synthetic peptide directed towards the middle region of human PSIP1. Synthetic peptide located within the following region: LEKEQTGSKTLNGGSDAQDGNQPQHNGESNEDSKDNHEASTKKKPSSEER |
| Formulation: | Liquid. Purified antibody supplied in 1x PBS buffer with 0.09% (w/v) sodium azide and 2% sucrose. <i>Note that this product is shipped as lyophilized powder to China customers.</i> |
| Purification: | Affinity Purified |
| Conjugation: | Unconjugated |
| Storage: | Store at -20°C as received. |
| Stability: | Stable for 12 months from date of receipt. |
| Predicted Protein Size: | 60 kDa |
| Gene Name: | PC4 and SFRS1 interacting protein 1 |
| Database Link: | NP_150091 Entrez Gene 11168 Human O75475 |
| Background: | PSIP1 is a transcriptional coactivator. It also acts as an adaptor to coordinate pre-mRNA splicing and transcriptional activation of class II genes. |
| Synonyms: | DFS70; LEDGF; p52; p75; PAIP; PSIP2 |
| Note: | Immunogen Sequence Homology: Dog: 100%; Pig: 100%; Rat: 100%; Horse: 100%; Human: 100%; Sheep: 100%; Bovine: 100%; Guinea pig: 100%; Rabbit: 86%; Mouse: 85% |



[View online »](#)

Protein Families: Stem cell - Pluripotency, Transcription Factors

Product images:



WB Suggested Anti-PSIP1 Antibody Titration: 0.2-1 ug/ml; ELISA Titer: 1:12500; Positive Control: 721_B cell lysate PSIP1 is strongly supported by BioGPS gene expression data to be expressed in Human 721_B cells