

Product datasheet for **TA337265**

RNF135 Rabbit Polyclonal Antibody

Product data:

Product Type:	Primary Antibodies
Applications:	WB
Recommended Dilution:	WB
Reactivity:	Human
Host:	Rabbit
Isotype:	IgG
Clonality:	Polyclonal
Immunogen:	The immunogen for anti-RNF135 antibody: synthetic peptide directed towards the middle region of human RNF135. Synthetic peptide located within the following region: DILHDLEEIQEKLQESVTWKEAPEAQMQGELLEAPSSSSCPLPDQSHPAL
Formulation:	Liquid. Purified antibody supplied in 1x PBS buffer with 0.09% (w/v) sodium azide and 2% sucrose. <i>Note that this product is shipped as lyophilized powder to China customers.</i>
Purification:	Affinity Purified
Conjugation:	Unconjugated
Storage:	Store at -20°C as received.
Stability:	Stable for 12 months from date of receipt.
Predicted Protein Size:	48 kDa
Gene Name:	ring finger protein 135
Database Link:	NP_115698 Entrez Gene 84282 Human Q8IUD6
Background:	The protein encoded by RNF135 contains a RING finger domain, a motif present in a variety of functionally distinct proteins and known to be involved in protein-protein and protein-DNA interactions. This gene is located in a chromosomal region known to be frequently deleted in patients with neurofibromatosis.
Synonyms:	L13; MMFD; REUL; Riplet

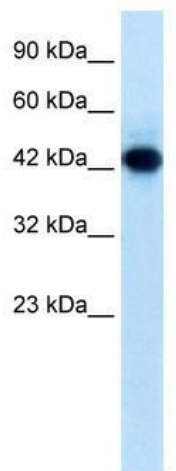


[View online »](#)

Note: Immunogen Sequence Homology: Human: 100%; Dog: 92%; Bovine: 92%; Pig: 91%; Guinea pig: 91%; Mouse: 86%; Rat: 83%; Horse: 77%

Protein Families: Druggable Genome

Product images:



WB Suggested Anti-RNF135 Antibody Titration:
0.2-1 ug/ml; ELISA Titer: 1:62500; Positive Control:
Jurkat cell lysate