

Product datasheet for **TA337264**

OTP Rabbit Polyclonal Antibody

Product data:

Product Type:	Primary Antibodies
Applications:	WB
Recommended Dilution:	WB
Reactivity:	Human
Host:	Rabbit
Isotype:	IgG
Clonality:	Polyclonal
Immunogen:	The immunogen for anti-OTP antibody: synthetic peptide directed towards the N terminal of human OTP. Synthetic peptide located within the following region: SDPGGHPGDLAPNSDPVEGATLLPGEDITTVGSTPASLAVSAKDPDKQPG
Formulation:	Liquid. Purified antibody supplied in 1x PBS buffer with 0.09% (w/v) sodium azide and 2% sucrose. <i>Note that this product is shipped as lyophilized powder to China customers.</i>
Purification:	Affinity Purified
Conjugation:	Unconjugated
Storage:	Store at -20°C as received.
Stability:	Stable for 12 months from date of receipt.
Predicted Protein Size:	34 kDa
Gene Name:	orthopedia homeobox
Database Link:	NP_115485 Entrez Gene 23440 Human Q5XKR4
Background:	OTP is probably involved in the differentiation of hypothalamic neuroendocrine cells. This gene encodes a member of the homeodomain (HD) family. HD family proteins are helix-turn-helix transcription factors that play key roles in the specification of cell fates. This protein may function during brain development.
Synonyms:	MGC3161

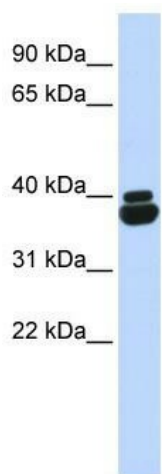


[View online »](#)

Note: Immunogen Sequence Homology: Dog: 100%; Pig: 100%; Rat: 100%; Horse: 100%; Human: 100%; Mouse: 100%; Bovine: 100%; Rabbit: 100%; Guinea pig: 100%; Zebrafish: 91%

Protein Families: Transcription Factors

Product images:



WB Suggested Anti-OTP Antibody Titration: 0.2-1 ug/ml; ELISA Titer: 1:312500; Positive Control: Human heart