

Product datasheet for **TA337263**

ADPGK Rabbit Polyclonal Antibody

Product data:

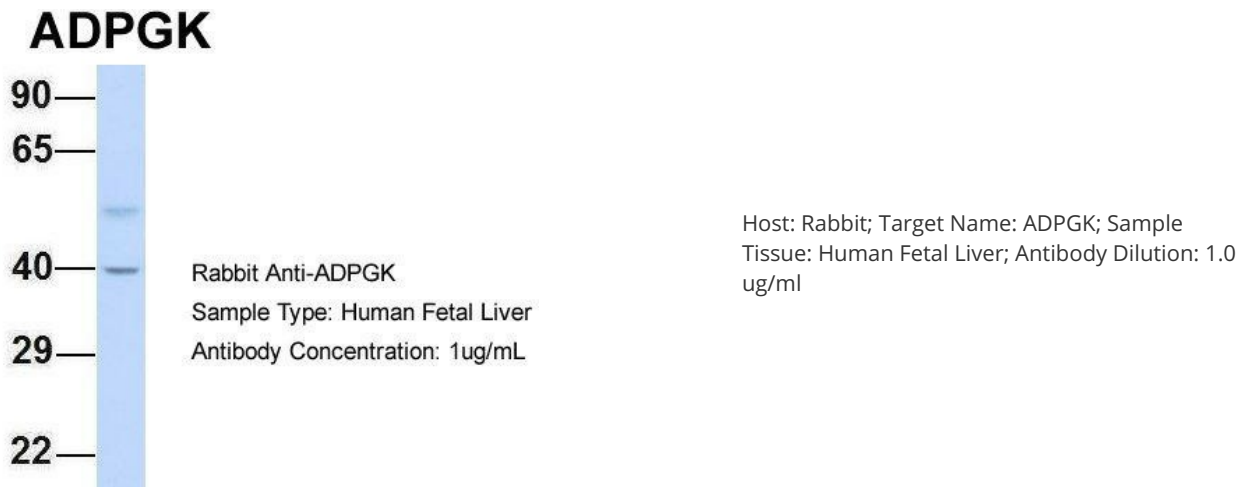
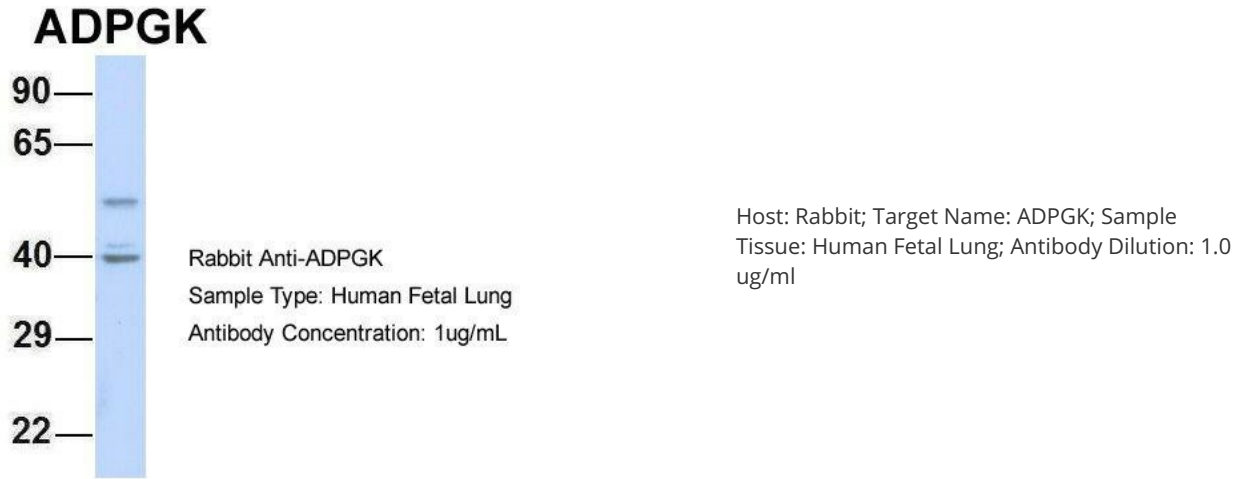
Product Type:	Primary Antibodies
Applications:	WB
Recommended Dilution:	WB
Reactivity:	Human
Host:	Rabbit
Isotype:	IgG
Clonality:	Polyclonal
Immunogen:	The immunogen for anti-ADPGK antibody: synthetic peptide directed towards the N terminal of human ADPGK. Synthetic peptide located within the following region: SILHSRNDLEEA FIHFMGKGAAAERFFSDKETFH DIAQVASEFPGAQH YV
Formulation:	Liquid. Purified antibody supplied in 1x PBS buffer with 0.09% (w/v) sodium azide and 2% sucrose. <i>Note that this product is shipped as lyophilized powder to China customers.</i>
Purification:	Affinity Purified
Conjugation:	Unconjugated
Storage:	Store at -20°C as received.
Stability:	Stable for 12 months from date of receipt.
Predicted Protein Size:	54 kDa
Gene Name:	ADP-dependent glucokinase
Database Link:	NP_112574 Entrez Gene 83440 Human Q9BRR6
Background:	ADPGK (EC 2.7.1.147) catalyzes the ADP-dependent phosphorylation of glucose to glucose-6-phosphate and may play a role in glycolysis, possibly during ischemic conditions. ADPGK (EC 2.7.1.147) catalyzes the ADP-dependent phosphorylation of glucose to glucose-6-phosphate and may play a role in glycolysis, possibly during ischemic conditions (Ronimus and Morgan, 2004 [PubMed 14975750]). [supplied by OMIM]
Synonyms:	2610017G09Rik; ADP-GK

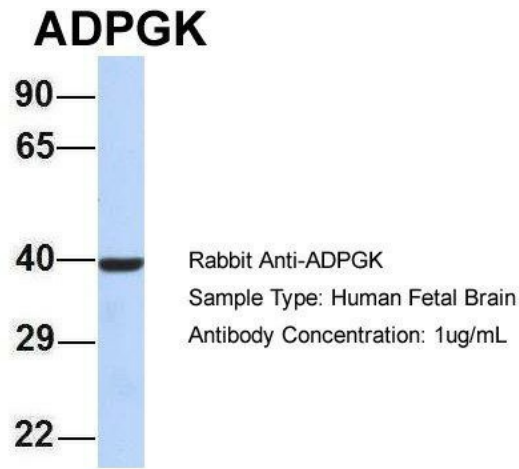


[View online »](#)

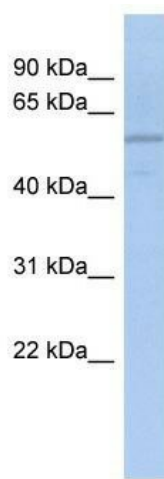
Note: Immunogen Sequence Homology: Human: 100%; Bovine: 100%; Mouse: 93%; Pig: 92%; Rat: 92%; Guinea pig: 92%; Horse: 86%; Rabbit: 83%; Dog: 77%

Product images:

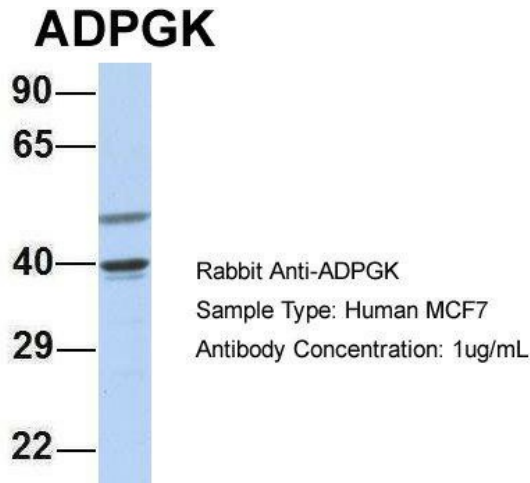




Host: Rabbit; Target Name: ADPGK; Sample Tissue: Human Fetal Brain; Antibody Dilution: 1.0 ug/ml

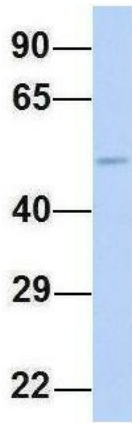


WB Suggested Anti-ADPGK Antibody Titration: 0.2-1 ug/ml; ELISA Titer: 1:62500; Positive Control: COLO205 cell lysate ADPGK is supported by BioGPS gene expression data to be expressed in COLO205



Host: Rabbit; Target Name: ADPGK; Sample Tissue: MCF7; Antibody Dilution: 1.0 ug/ml ADPGK is supported by BioGPS gene expression data to be expressed in MCF7

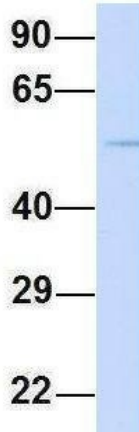
ADPGK



Rabbit Anti-ADPGK
Sample Type: Human HeLa
Antibody Concentration: 1ug/mL

Host: Rabbit; Target Name: ADPGK; Sample Tissue: HeLa; Antibody Dilution: 1.0 ug/ml ADPGK is supported by BioGPS gene expression data to be expressed in HeLa

ADPGK



Rabbit Anti-ADPGK
Sample Type: Human 293T
Antibody Concentration: 1ug/mL

Host: Rabbit; Target Name: ADPGK; Sample Tissue: 293T; Antibody Dilution: 1.0 ug/ml ADPGK is supported by BioGPS gene expression data to be expressed in HEK293T