

## Product datasheet for **TA337261**

### LAS1L Rabbit Polyclonal Antibody

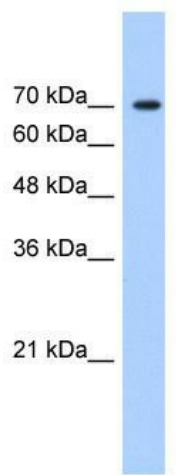
#### Product data:

Product Type:	Primary Antibodies
Applications:	WB
Recommended Dilution:	WB
Reactivity:	Human
Host:	Rabbit
Isotype:	IgG
Clonality:	Polyclonal
Immunogen:	The immunogen for anti-LAS1L antibody: synthetic peptide directed towards the C terminal of human LAS1L. Synthetic peptide located within the following region: SSFGSEAKAQQQEEQGSVNDVKEEEKEEKEVLPDQVEEEEENDDQEEEE
Formulation:	Liquid. Purified antibody supplied in 1x PBS buffer with 0.09% (w/v) sodium azide and 2% sucrose. <i>Note that this product is shipped as lyophilized powder to China customers.</i>
Purification:	Protein A purified
Conjugation:	Unconjugated
Storage:	Store at -20°C as received.
Stability:	Stable for 12 months from date of receipt.
Predicted Protein Size:	83 kDa
Gene Name:	LAS1-like, ribosome biogenesis factor
Database Link:	<a href="#">NP_112483</a> <a href="#">Entrez Gene 81887 Human</a> <a href="#">Q9Y4W2</a>
Background:	The function of LAS1L has not been determined
Synonyms:	dj475B7.2; Las1-like; WTS
Note:	Immunogen Sequence Homology: Human: 100%; Horse: 85%; Bovine: 79%

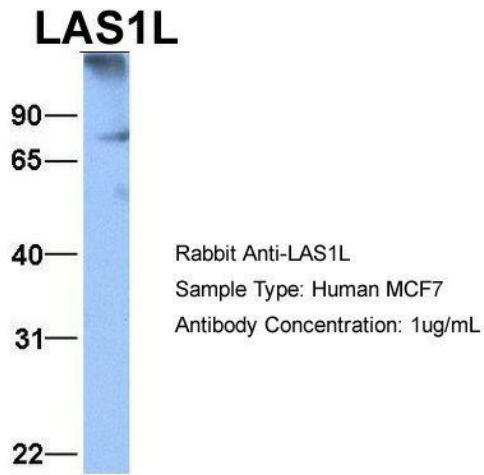


[View online »](#)

Product images:

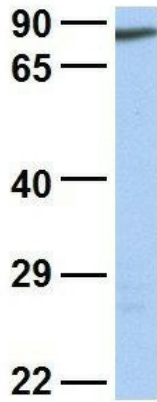


WB Suggested Anti-LAS1L Antibody; Titration: 1.25 ug/ml; Positive Control: HepG2 Whole Cell



Host: Rabbit; Target Name: LAS1L; Sample Tissue: MCF7; Antibody Dilution: 1.0 ug/ml LAS1L is supported by BioGPS gene expression data to be expressed in MCF7

# LAS1L



Rabbit Anti-LAS1L  
Sample Type: Human HT1080  
Antibody Concentration: 1ug/mL

Host: Rabbit; Target Name: LAS1L; Sample Tissue: HT1080; Antibody Dilution: 1.0 ug/ml LAS1L is supported by BioGPS gene expression data to be expressed in HT1080