

Product datasheet for **TA337260**

LAS1L Rabbit Polyclonal Antibody

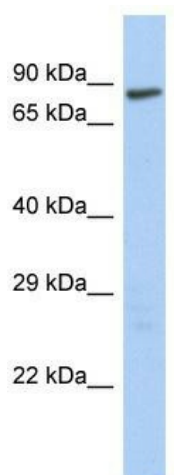
Product data:

Product Type:	Primary Antibodies
Applications:	WB
Recommended Dilution:	WB
Reactivity:	Human
Host:	Rabbit
Isotype:	IgG
Clonality:	Polyclonal
Immunogen:	The immunogen for Anti-LAS1L antibody is: synthetic peptide directed towards the middle region of Human LAS1L. Synthetic peptide located within the following region: SSFGSEAKAQQEEQGSVNDVKEEEEKEEVLDPQVEEEEENDDQEEEE
Formulation:	Liquid. Purified antibody supplied in 1x PBS buffer with 0.09% (w/v) sodium azide and 2% sucrose. <i>Note that this product is shipped as lyophilized powder to China customers.</i>
Purification:	Affinity Purified
Conjugation:	Unconjugated
Storage:	Store at -20°C as received.
Stability:	Stable for 12 months from date of receipt.
Predicted Protein Size:	83 kDa
Gene Name:	LAS1-like, ribosome biogenesis factor
Database Link:	NP_112483 Entrez Gene 81887 Human Q9Y4W2
Background:	The function of LAS1L has not been determined.
Synonyms:	dj475B7.2; Las1-like; WTS
Note:	Immunogen Sequence Homology: Human: 100%; Horse: 85%; Bovine: 79%



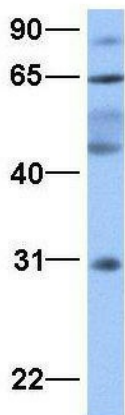
[View online »](#)

Product images:



WB Suggested Anti-LAS1L Antibody Titration: 0.2-1 ug/ml; Positive Control: HepG2 cell lysate

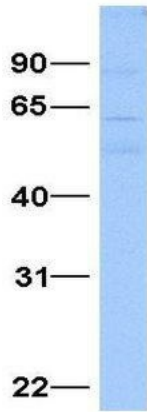
LAS1L



Rabbit Anti-LAS1L
 Sample Type: Human Fetal Brain
 Antibody Concentration: 1ug/mL

Host: Rabbit; Target Name: LAS1L; Sample Tissue: Human Fetal Brain; Antibody Dilution: 1.0 ug/ml

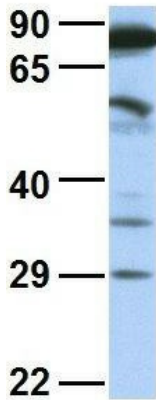
LAS1L



Rabbit Anti-LAS1L
 Sample Type: Human Fetal Liver
 Antibody Concentration: 1ug/mL

Host: Rabbit; Target Name: LAS1L; Sample Tissue: Human Fetal Liver; Antibody Dilution: 1.0 ug/ml

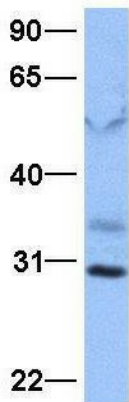
LAS1L



Rabbit Anti-LAS1L
 Sample Type: Human COLO205
 Antibody Concentration: 1ug/mL

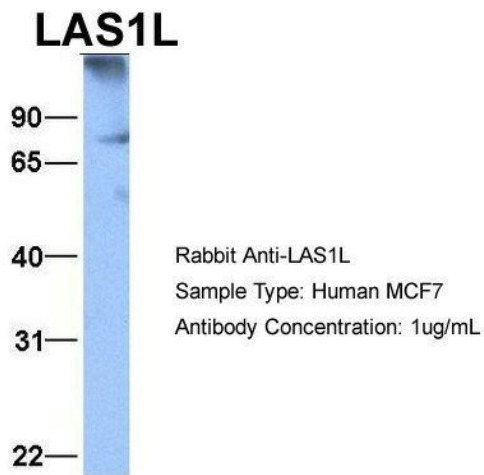
Host: Rabbit; Target Name: LAS1L; Sample Tissue: COLO205; Antibody Dilution: 1.0 ug/ml LAS1L is supported by BioGPS gene expression data to be expressed in COLO205

LAS1L

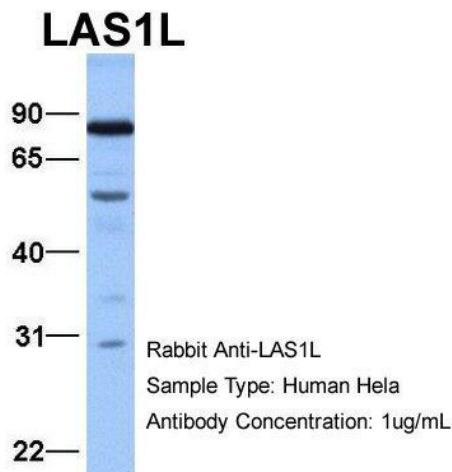


Rabbit Anti-LAS1L
 Sample Type: Human Jurkat
 Antibody Concentration: 1ug/mL

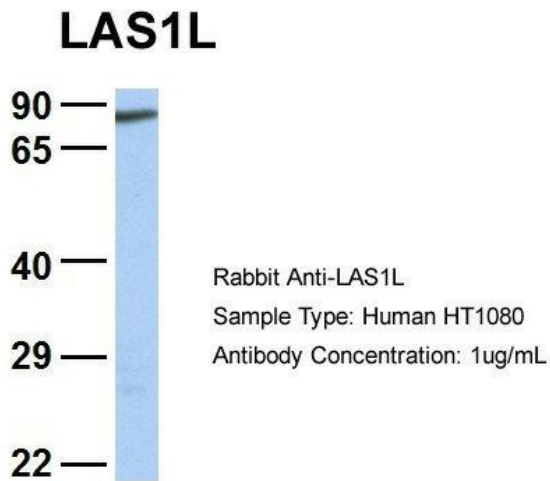
Host: Rabbit; Target Name: LAS1L; Sample Tissue: Jurkat; Antibody Dilution: 1.0 ug/ml LAS1L is supported by BioGPS gene expression data to be expressed in Jurkat



Host: Rabbit; Target Name: LAS1L; Sample Tissue: MCF7; Antibody Dilution: 1.0 ug/ml LAS1L is supported by BioGPS gene expression data to be expressed in MCF7

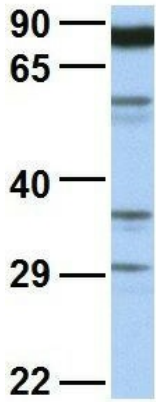


Host: Rabbit; Target Name: LAS1L; Sample Tissue: HeLa; Antibody Dilution: 1.0 ug/ml LAS1L is supported by BioGPS gene expression data to be expressed in HeLa



Host: Rabbit; Target Name: LAS1L; Sample Tissue: HT1080; Antibody Dilution: 1.0 ug/ml LAS1L is supported by BioGPS gene expression data to be expressed in HT1080

LAS1L



Rabbit Anti-LAS1L
Sample Type: Human OVCAR-3
Antibody Concentration: 1ug/mL

Host: Rabbit; Target Name: LAS1L; Sample Tissue: OVCAR-3; Antibody Dilution: 1.0 ug/ml LAS1L is supported by BioGPS gene expression data to be expressed in OVCAR3