

Product datasheet for **TA337259**

BTBD14A (NACC2) Rabbit Polyclonal Antibody

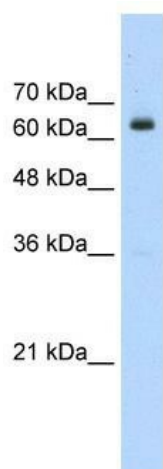
Product data:

Product Type:	Primary Antibodies
Applications:	IHC, WB
Recommended Dilution:	WB, IHC
Reactivity:	Human
Host:	Rabbit
Isotype:	IgG
Clonality:	Polyclonal
Immunogen:	The immunogen for anti-BTBD14A antibody: synthetic peptide directed towards the N terminal of human BTBD14A. Synthetic peptide located within the following region: CDVSIVVKGQAFKAHRAVLAASSLYFRDLFSGNSKSAFELPGSVPPACFQ
Formulation:	Liquid. Purified antibody supplied in 1x PBS buffer with 0.09% (w/v) sodium azide and 2% sucrose. <i>Note that this product is shipped as lyophilized powder to China customers.</i>
Purification:	Protein A purified
Conjugation:	Unconjugated
Storage:	Store at -20°C as received.
Stability:	Stable for 12 months from date of receipt.
Predicted Protein Size:	63 kDa
Gene Name:	NACC family member 2
Database Link:	NP_653254 Entrez Gene 138151 Human Q96BF6
Background:	cDNA sequence was generated by The National Institutes of Health Mammalian Gene Collection (MGC) Program.
Synonyms:	BEND9; BTBD14; BTBD14A; BTBD31; NAC-2; RBB
Note:	Immunogen Sequence Homology: Dog: 100%; Pig: 100%; Rat: 100%; Horse: 100%; Human: 100%; Mouse: 100%; Bovine: 100%; Guinea pig: 100%

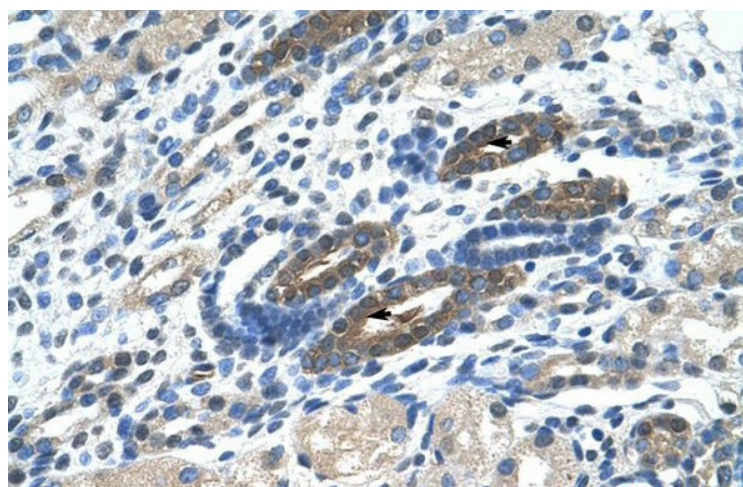


[View online »](#)

Product images:



WB Suggested Anti-BTBD14A Antibody Titration: 0.625 ug/ml; Positive Control: Jurkat cell lysate



Human kidney