

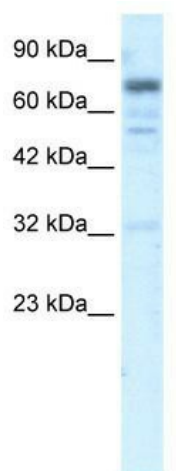
Product datasheet for **TA337253**

RIN3 Rabbit Polyclonal Antibody

Product data:

Product Type:	Primary Antibodies
Applications:	WB
Recommended Dilution:	WB
Reactivity:	Human
Host:	Rabbit
Isotype:	IgG
Clonality:	Polyclonal
Immunogen:	The immunogen for anti-RIN3 antibody: synthetic peptide directed towards the N terminal of human RIN3. Synthetic peptide located within the following region: AGMFLVRRDSSSKQLVLCVHFPSLNESSAEVLEYTIKEEKSILYLEGSAL
Formulation:	Liquid. Purified antibody supplied in 1x PBS buffer with 0.09% (w/v) sodium azide and 2% sucrose.
Purification:	Protein A purified
Conjugation:	Unconjugated
Storage:	Store at -20°C as received.
Stability:	Stable for 12 months from date of receipt.
Predicted Protein Size:	108 kDa
Gene Name:	Ras and Rab interactor 3
Database Link:	NP_079108 Entrez Gene 79890 Human Q8TB24
Background:	RIN3, biochemically characterized as the stimulator and stabilizer for GTP-Rab5, plays an important role in the transport pathway from plasma membrane to early endosomes.
Synonyms:	DKFZp762H1613; FLJ11700; FLJ22439
Note:	Immunogen Sequence Homology: Human: 100%; Pig: 93%; Bovine: 93%; Horse: 92%; Rat: 90%; Mouse: 79%; Dog: 77%


[View online »](#)

Product images:

WB Suggested Anti-RIN3 Antibody Titration: 5.0 ug/ml; ELISA Titer: 1:62500; Positive Control: HepG2 cell lysate. There is BioGPS gene expression data showing that RIN3 is expressed in HepG2.