

Product datasheet for **TA337252**

C16orf44 (KLHL36) Rabbit Polyclonal Antibody

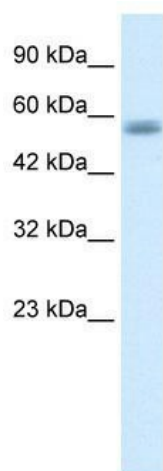
Product data:

Product Type:	Primary Antibodies
Applications:	WB
Recommended Dilution:	WB
Reactivity:	Human
Host:	Rabbit
Isotype:	IgG
Clonality:	Polyclonal
Immunogen:	The immunogen for anti-C16ORF44 antibody: synthetic peptide directed towards the N terminal of human C16ORF44. Synthetic peptide located within the following region: FCCEYLEQEVSEDNYLYLQELASIYSLKRLDAFIDGFILNHFGTLSFTPD
Formulation:	Liquid. Purified antibody supplied in 1x PBS buffer with 0.09% (w/v) sodium azide and 2% sucrose. <i>Note that this product is shipped as lyophilized powder to China customers.</i>
Purification:	Protein A purified
Conjugation:	Unconjugated
Storage:	Store at -20°C as received.
Stability:	Stable for 12 months from date of receipt.
Predicted Protein Size:	70 kDa
Gene Name:	kelch like family member 36
Database Link:	NP_079007 Entrez Gene 79786 Human Q8N4N3
Background:	C16orf44 is an open reading frame 44, found in chromosome 16
Synonyms:	C16orf44
Note:	Immunogen Sequence Homology: Dog: 100%; Pig: 100%; Rat: 100%; Human: 100%; Mouse: 100%; Bovine: 100%; Rabbit: 100%; Guinea pig: 100%; Horse: 93%; Zebrafish: 83%



[View online »](#)

Product images:



WB Suggested Anti-C16ORF44 Antibody Titration:
1.0 ug/ml; ELISA Titer: 1:500; Positive Control:
HepG2 cell lysate