

## Product datasheet for **TA337251**

### **C16orf44 (KLHL36) Rabbit Polyclonal Antibody**

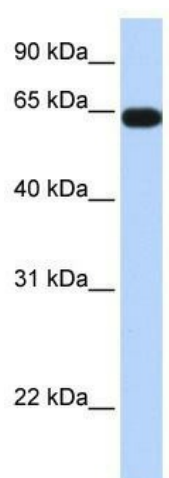
#### **Product data:**

<b>Product Type:</b>	Primary Antibodies
<b>Applications:</b>	WB
<b>Recommended Dilution:</b>	WB
<b>Reactivity:</b>	Human
<b>Host:</b>	Rabbit
<b>Isotype:</b>	IgG
<b>Clonality:</b>	Polyclonal
<b>Immunogen:</b>	The immunogen for anti-C16orf44 antibody: synthetic peptide directed towards the middle region of human C16orf44. Synthetic peptide located within the following region: EDMLVAIGGRNENGALSSVETYS PKTDSWSYVAGLP RFTYGHAGTIYKDF
<b>Formulation:</b>	Liquid. Purified antibody supplied in 1x PBS buffer with 0.09% (w/v) sodium azide and 2% sucrose. <i>Note that this product is shipped as lyophilized powder to China customers.</i>
<b>Purification:</b>	Affinity Purified
<b>Conjugation:</b>	Unconjugated
<b>Storage:</b>	Store at -20°C as received.
<b>Stability:</b>	Stable for 12 months from date of receipt.
<b>Predicted Protein Size:</b>	70 kDa
<b>Gene Name:</b>	kelch like family member 36
<b>Database Link:</b>	<a href="#">NP_079007</a> <a href="#">Entrez Gene 79786 Human</a> <a href="#">Q8N4N3</a>
<b>Background:</b>	C16orf44(KLHL36) probable substrate-specific adapter of an E3 ubiquitin-protein ligase complex which mediates the ubiquitination and subsequent proteasomal degradation of target proteins.
<b>Synonyms:</b>	C16orf44
<b>Note:</b>	Immunogen Sequence Homology: Dog: 100%; Rat: 100%; Horse: 100%; Human: 100%; Bovine: 100%; Pig: 93%; Mouse: 93%; Guinea pig: 93%; Rabbit: 86%



[View online »](#)

## Product images:



WB Suggested Anti-C16orf44 Antibody Titration:  
0.2-1 ug/ml; ELISA Titer: 1:62500; Positive Control:  
Human heart