

Product datasheet for **TA337250**

Nac1 (NACC1) Rabbit Polyclonal Antibody

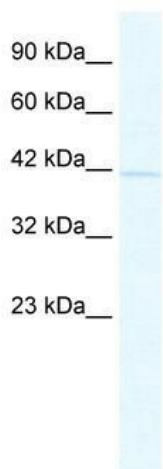
Product data:

| | |
|--------------------------------|------------------------------------------------------------------------------------------------------------------------------------------------------------------------------------------------------------------------------|
| Product Type: | Primary Antibodies |
| Applications: | IHC, WB |
| Recommended Dilution: | WB, IHC |
| Reactivity: | Human |
| Host: | Rabbit |
| Isotype: | IgG |
| Clonality: | Polyclonal |
| Immunogen: | The immunogen for anti-BTBD14B antibody: synthetic peptide directed towards the middle region of human BTBD14B. Synthetic peptide located within the following region: EGMDEQYRQICNMYTMYSMMNVGQTAEKVEALPEQVAPESRNRIRVRQDL |
| Formulation: | Liquid. Purified antibody supplied in 1x PBS buffer with 0.09% (w/v) sodium azide and 2% sucrose. <i>Note that this product is shipped as lyophilized powder to China customers.</i> |
| Purification: | Protein A purified |
| Conjugation: | Unconjugated |
| Storage: | Store at -20°C as received. |
| Stability: | Stable for 12 months from date of receipt. |
| Predicted Protein Size: | 57 kDa |
| Gene Name: | nucleus accumbens associated 1 |
| Database Link: | NP_443108 Entrez Gene 112939 Human Q96RE7 |
| Background: | The function of the Anti-BTBD14B gene has not yet been determined |
| Synonyms: | BEND8; BTBD14B; BTBD30; NAC-1; NAC1 |
| Note: | Immunogen Sequence Homology: Dog: 100%; Pig: 100%; Rat: 100%; Horse: 100%; Human: 100%; Mouse: 100%; Bovine: 100%; Guinea pig: 83% |
| Protein Families: | ES Cell Differentiation/IPS, Stem cell - Pluripotency |

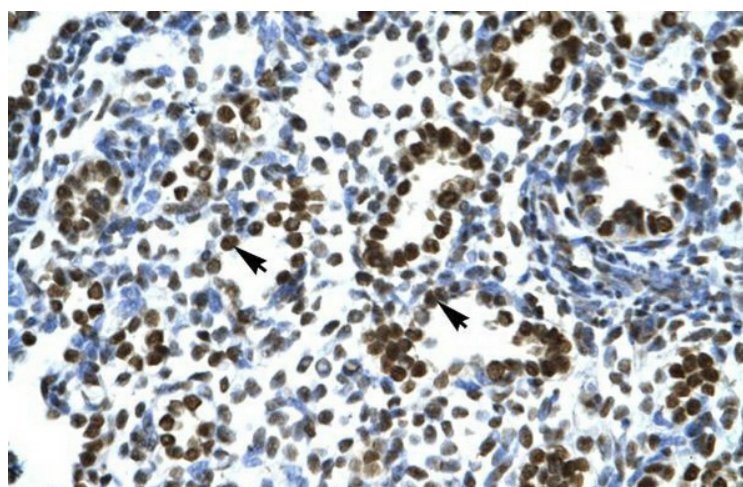


[View online »](#)

Product images:



WB Suggested Anti-BTBD14B Antibody Titration: 2.5 ug/ml; ELISA Titer: 1:312500; Positive Control: Jurkat cell lysate



Human Lung