

Product datasheet for **TA337249**

KLHL25 Rabbit Polyclonal Antibody

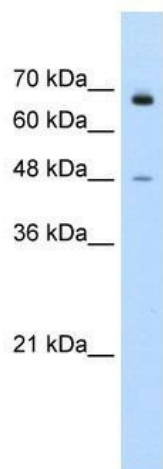
Product data:

Product Type:	Primary Antibodies
Applications:	IHC, WB
Recommended Dilution:	WB, IHC
Reactivity:	Human
Host:	Rabbit
Isotype:	IgG
Clonality:	Polyclonal
Immunogen:	The immunogen for anti-KLHL25 antibody: synthetic peptide directed towards the N terminal of human KLHL25. Synthetic peptide located within the following region: RLYEFWRMCLVHFETVRQSEDFNLSKDTLLDLISSDELETEDERVVFE
Formulation:	Liquid. Purified antibody supplied in 1x PBS buffer with 0.09% (w/v) sodium azide and 2% sucrose. <i>Note that this product is shipped as lyophilized powder to China customers.</i>
Purification:	Protein A purified
Conjugation:	Unconjugated
Storage:	Store at -20°C as received.
Stability:	Stable for 12 months from date of receipt.
Predicted Protein Size:	66 kDa
Gene Name:	kelch like family member 25
Database Link:	NP_071925 Entrez Gene 64410 Human Q9H0H3
Background:	KLHL25 is also known as ENC2. It is a BTB/POZ KELCH domain protein
Synonyms:	ENC-2; ENC2
Note:	Immunogen Sequence Homology: Dog: 100%; Pig: 100%; Human: 100%; Bovine: 93%; Guinea pig: 93%; Rat: 86%; Mouse: 86%; Rabbit: 86%

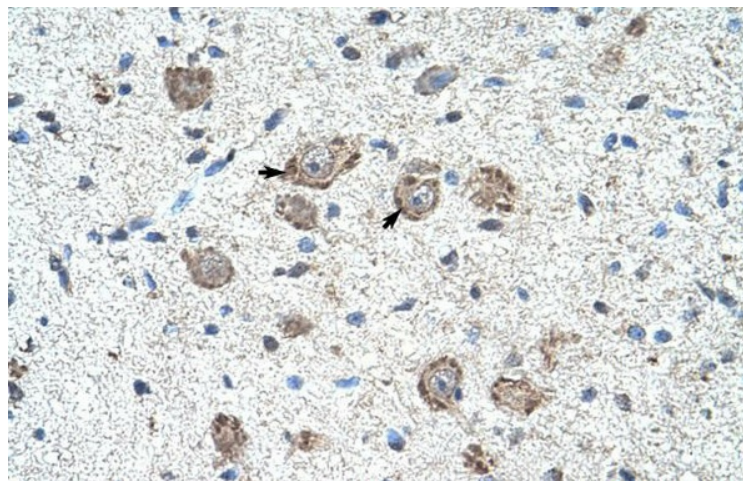


[View online »](#)

Product images:



WB Suggested Anti-KLHL25 Antibody Titration:
0.3125 ug/ml; Positive Control: Jurkat cell lysate



Human Brain