

Product datasheet for **TA337248**

EGLN1 Rabbit Polyclonal Antibody

Product data:

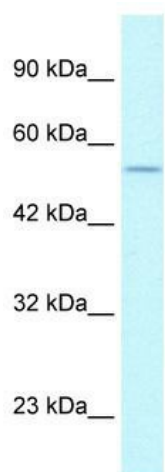
Product Type:	Primary Antibodies
Applications:	WB
Recommended Dilution:	WB
Reactivity:	Human
Host:	Rabbit
Isotype:	IgG
Clonality:	Polyclonal
Immunogen:	The immunogen for anti-EGLN1 antibody: synthetic peptide directed towards the C terminal of human EGLN1. Synthetic peptide located within the following region: QPAYATRYAITVWYFDADERARAKVKYLTGEKGVRELNKPSDSVKGKDVF
Formulation:	Liquid. Purified antibody supplied in 1x PBS buffer with 0.09% (w/v) sodium azide and 2% sucrose. <i>Note that this product is shipped as lyophilized powder to China customers.</i>
Purification:	Protein A purified
Conjugation:	Unconjugated
Storage:	Store at -20°C as received.
Stability:	Stable for 12 months from date of receipt.
Predicted Protein Size:	46 kDa
Gene Name:	egl-9 family hypoxia inducible factor 1
Database Link:	NP_071334 Entrez Gene 54583 Human Q9GZT9
Background:	EGLN1 has a role in the regulation of hypoxia-inducible factor. It is not affected by overexpression or downregulation of HIF-2alpha.
Synonyms:	C1orf12; ECYT3; HALAH; HIF-PH2; HIFPH2; HPH-2; HPH2; PHD2; SM20; ZMYND6
Note:	Immunogen Sequence Homology: Dog: 100%; Pig: 100%; Rat: 100%; Horse: 100%; Human: 100%; Mouse: 100%; Bovine: 100%; Rabbit: 100%; Guinea pig: 100%; Zebrafish: 93%



[View online »](#)

Protein Pathways: Pathways in cancer, Renal cell carcinoma

Product images:



WB Suggested Anti-EGLN1 Antibody Titration:
1.25 ug/ml; ELISA Titer: 1:12500; Positive Control:
HepG2 cell lysate