

Product datasheet for **TA337247**

ZNF148 Rabbit Polyclonal Antibody

Product data:

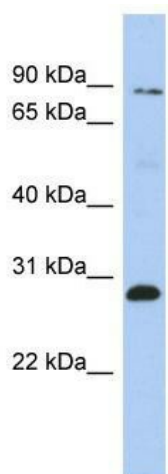
Product Type:	Primary Antibodies
Applications:	IHC, WB
Recommended Dilution:	WB
Reactivity:	Human
Host:	Rabbit
Isotype:	IgG
Clonality:	Polyclonal
Immunogen:	The immunogen for anti-ZNF148 antibody: synthetic peptide directed towards the middle region of human ZNF148. Synthetic peptide located within the following region: RCAIKGGLLTSEEDSGFSTSPKDNSLPKPKKRQKTEKKSSGMDKESALDKS
Formulation:	Liquid. Purified antibody supplied in 1x PBS buffer with 0.09% (w/v) sodium azide and 2% sucrose. <i>Note that this product is shipped as lyophilized powder to China customers.</i>
Purification:	Affinity Purified
Conjugation:	Unconjugated
Storage:	Store at -20°C as received.
Stability:	Stable for 12 months from date of receipt.
Predicted Protein Size:	89 kDa
Gene Name:	zinc finger protein 148
Database Link:	NP_068799 Entrez Gene 7707 Human Q9UQR1
Background:	ZNF148 is involved in transcriptional regulation. ZNF148 represses the transcription of a number of genes including gastrin, stromelysin and enolase. ZNF148 binds to the G-rich box in the enhancer region of these genes.
Synonyms:	BERF-1; BFCOL1; HT-BETA; pHZ-52; ZBP-89; ZFP148
Note:	Immunogen Sequence Homology: Dog: 100%; Pig: 100%; Horse: 100%; Human: 100%; Mouse: 100%; Bovine: 100%; Rabbit: 100%; Rat: 93%; Guinea pig: 93%; Zebrafish: 85%; Yeast: 83%



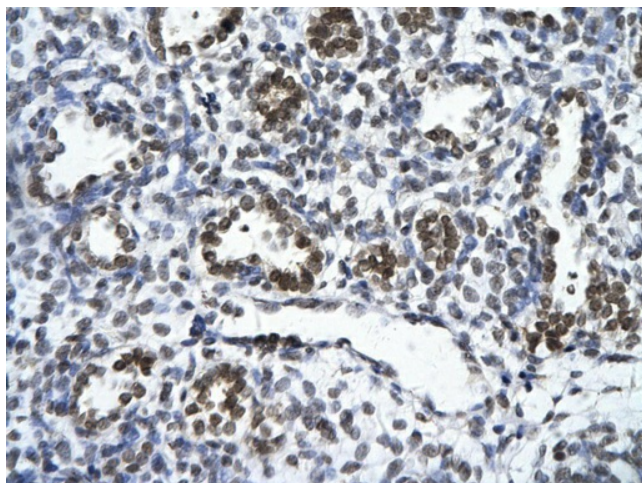
[View online »](#)

Protein Families: Transcription Factors

Product images:



WB Suggested Anti-ZNF148 Antibody Titration: 0.2-1 ug/ml; ELISA Titer: 1:312500; Positive Control: OVCAR-3 cell lysate ZNF148 is strongly supported by BioGPS gene expression data to be expressed in Human OVCAR3 cells



Rabbit Anti-ZNF148 Antibody; Paraffin Embedded Tissue: Human alveolar cell; Cellular Data: Epithelial cells of renal tubule; Antibody Concentration: 4.0-8.0 ug/ml; Magnification: 400X