

## Product datasheet for **TA337246**

### **C3IP1 (KLHL12) Rabbit Polyclonal Antibody**

#### **Product data:**

<b>Product Type:</b>	Primary Antibodies
<b>Applications:</b>	WB
<b>Recommended Dilution:</b>	WB
<b>Reactivity:</b>	Human
<b>Host:</b>	Rabbit
<b>Isotype:</b>	IgG
<b>Clonality:</b>	Polyclonal
<b>Immunogen:</b>	The immunogen for Anti-KLHL12 antibody is: synthetic peptide directed towards the N-terminal region of Human KLHL12. Synthetic peptide located within the following region: EKGKPYVDIQGLTASTMEILLDFVYTETVHVTVENVQELLPAACLLQLKG
<b>Formulation:</b>	Liquid. Purified antibody supplied in 1x PBS buffer with 0.09% (w/v) sodium azide and 2% sucrose.
<b>Purification:</b>	Affinity Purified
<b>Conjugation:</b>	Unconjugated
<b>Storage:</b>	Store at -20°C as received.
<b>Stability:</b>	Stable for 12 months from date of receipt.
<b>Predicted Protein Size:</b>	63 kDa
<b>Gene Name:</b>	kelch like family member 12
<b>Database Link:</b>	<a href="#">NP_067646</a> <a href="#">Entrez Gene 59349 Human</a> <a href="#">Q53G59</a>



[View online »](#)

**Background:**

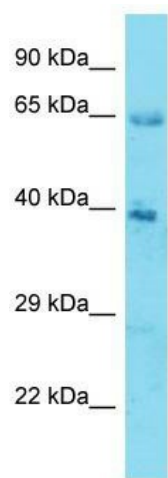
KLHL12 is a substrate-specific adapter of a BCR (BTB-CUL3-RBX1) E3 ubiquitin ligase complex that acts as a negative regulator of Wnt signaling pathway and ER-Golgi transport. The BCR(KLHL12) complex is involved in ER-Golgi transport by regulating the size of COPII coats, thereby playing a key role in collagen export, which is required for embryonic stem (ES) cells division: BCR(KLHL12) acts by mediating monoubiquitination of SEC31 (SEC31A or SEC31B). As part of the BCR(KLHL12) complex, also acts as a negative regulator of the Wnt signaling pathway by mediating ubiquitination and subsequent proteolysis of DVL3. The BCR(KLHL12) complex also mediates polyubiquitination of DRD4, without leading to degradation of DRD4.

**Synonyms:**

C3IP1; DKIR

**Note:**

Immunogen Sequence Homology: Dog: 100%; Pig: 100%; Rat: 100%; Horse: 100%; Human: 100%; Mouse: 100%; Bovine: 100%; Rabbit: 100%; Guinea pig: 100%; Zebrafish: 86%

**Product images:**

Host: Rabbit; Target Name: KLHL12; Sample Tissue: Stomach Tumor lysates; Antibody Dilution: 1.0 ug/ml