

Product datasheet for **TA337244**

DMTF1 Rabbit Polyclonal Antibody

Product data:

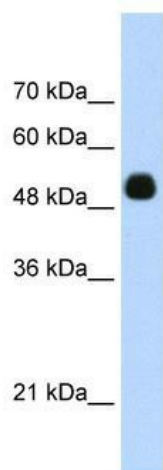
Product Type:	Primary Antibodies
Applications:	IHC, WB
Recommended Dilution:	WB, IHC
Reactivity:	Human
Host:	Rabbit
Isotype:	IgG
Clonality:	Polyclonal
Immunogen:	The immunogen for anti-DMTF1 antibody: synthetic peptide directed towards the C terminal of human DMTF1. Synthetic peptide located within the following region: SFNDAHVSKFSDQNSTELMNSVMVRTEEEISDSDLKQEESPSDLASAYVT
Formulation:	Liquid. Purified antibody supplied in 1x PBS buffer with 0.09% (w/v) sodium azide and 2% sucrose. <i>Note that this product is shipped as lyophilized powder to China customers.</i>
Purification:	Affinity Purified
Conjugation:	Unconjugated
Storage:	Store at -20°C as received.
Stability:	Stable for 12 months from date of receipt.
Predicted Protein Size:	54 kDa
Gene Name:	cyclin D binding myb like transcription factor 1
Database Link:	NP_066968 Entrez Gene 9988 Human Q9Y222
Background:	DMTF1 binds specifically to the nonamer DNA consensus sequences CCCG(G/T)ATGT to activate transcription.
Synonyms:	DMP1; DMTF; hDMP1; MRUL
Note:	Immunogen Sequence Homology: Human: 100%; Dog: 92%; Rat: 92%; Horse: 92%; Mouse: 92%; Rabbit: 92%; Pig: 91%; Guinea pig: 91%



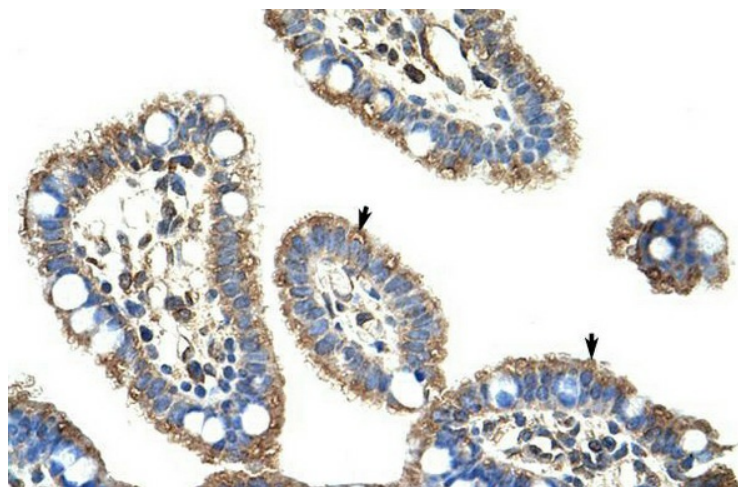
[View online »](#)

Protein Families: Transcription Factors

Product images:



WB Suggested Anti-DMTF1 Antibody Titration:
0.2-1 ug/ml; Positive Control: HepG2 cell lysate



Human Intestine